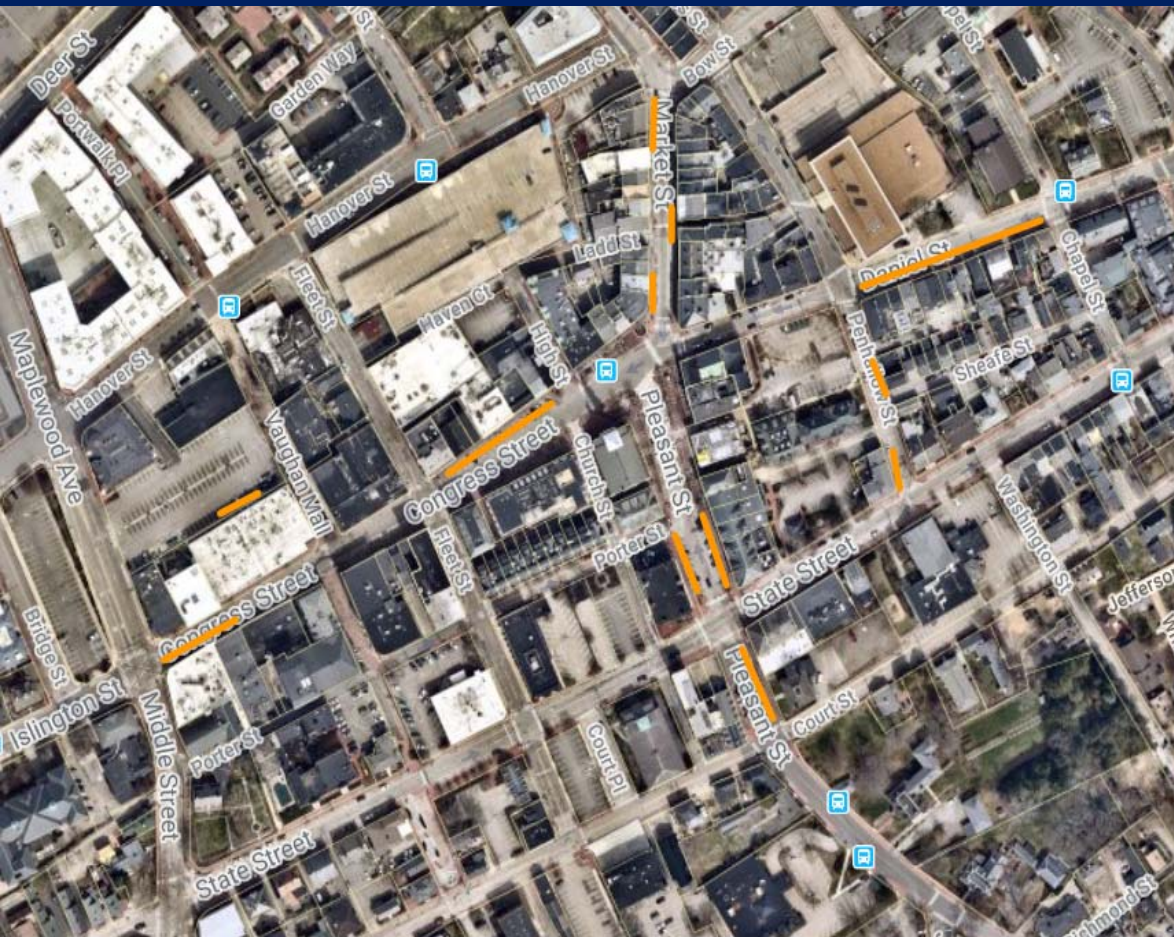


Approvals for Outdoor Dining on Public Streets



Worth Lot:

La Maison Navarre (20-24)
Friendly Toast (20-25)
Café Mediterraneo (20-21)

Bridge Street:

Bridge Street Bistrot (20-19)

Market Street:

Cup of Joe (20-23)
Portsmouth Brewery (20-9)

Durbar Square (20-31)

Gas Light (20-35)

Penhallow Street:

Cure (20-28)
Cere's Bakery (20-32)
Massimo (20-29)

Moxy (20-34)

Congress Street:

Thirsty Moose (20-22)*

Flatbread (20-20)

The Goat (20-26)

Jumpin' Jays (20-41)

Rudi's (20-42)

High Street

Starbucks (pending)

State Street+:

Fezziwig's (20-6)

Mr. Kim's (20-18)

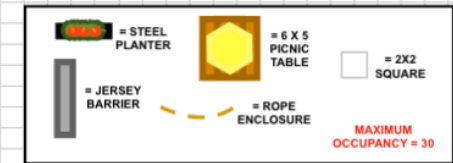
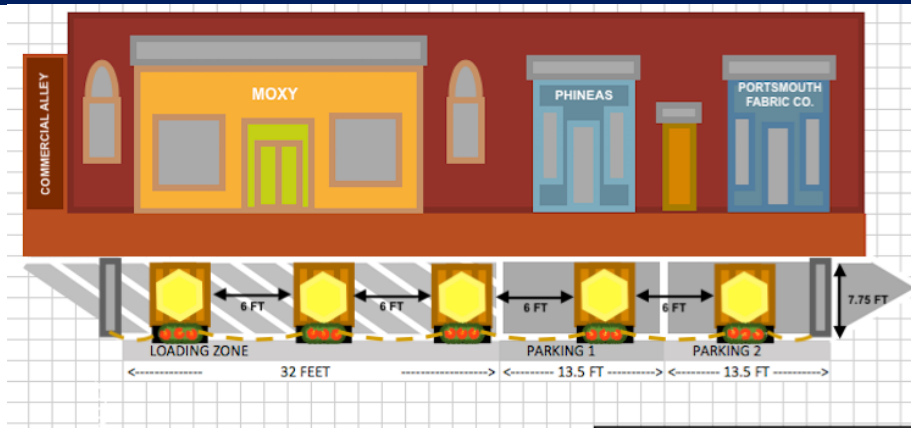
Portwalk Place:

Row 34 (20-2)

Hill Street:

Dwyer's Pub (20-36)

1. Moxy – 106 Penhallow St.



RECOMMEND APPROVAL IS CONTINGENT ON:

- Use of loading zone only for outdoor café;
- Relocation of loading zone per DPW requirements with allowance for after hours parking;
- Staff approval of tables/seating diagram.

2. Thirsty Moose – 21 Congress St.

Previously approved for use of 5 parking spaces (with abutter approval for use of additional street frontage). Has requested use of an additional 3 spaces (with approval from the Works Cafe).

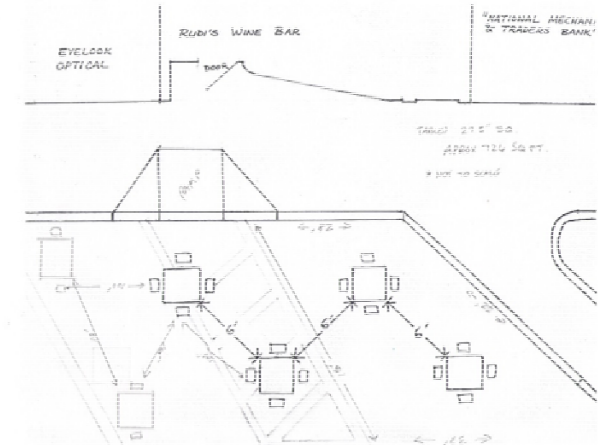
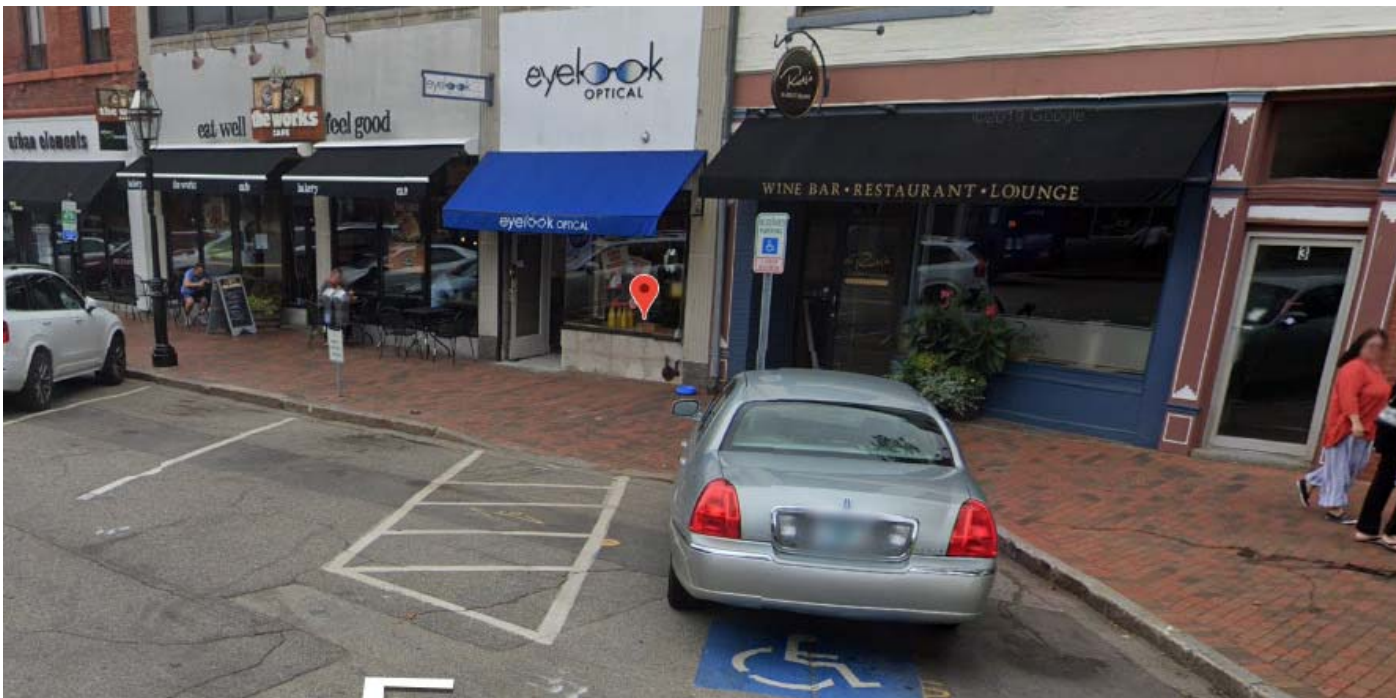


RECOMMEND APPROVAL IS CONTINGENT ON:

- Reconfiguration of Congress Street to relocate parking to existing travel lane;
- Staff approval of revised tables/seating diagram;
- Potential reallocation of space for neighboring business use;
- Retention of existing 15-minute parking spots.

3. Rudi's – 1 Congress St.

Request for use of two parking spaces (existing 15-minute space and ADA parking space) for 6 tables and seating.



RECOMMEND APPROVAL IS CONTINGENT ON:

- Reconfiguration of Congress Street to relocate parking to existing travel lane;
- Retention of ADA and 15-minute parking;
- Staff approval of tables/seating diagram.



117-12

117-14

117-13

117-11

117-10

117-9

117-37

8 foot wide parking lane

11+ foot wide through lane

11 foot wide left-turn lane

Congress Street

High St

Church St

High St - Church St

1

1

E

2

