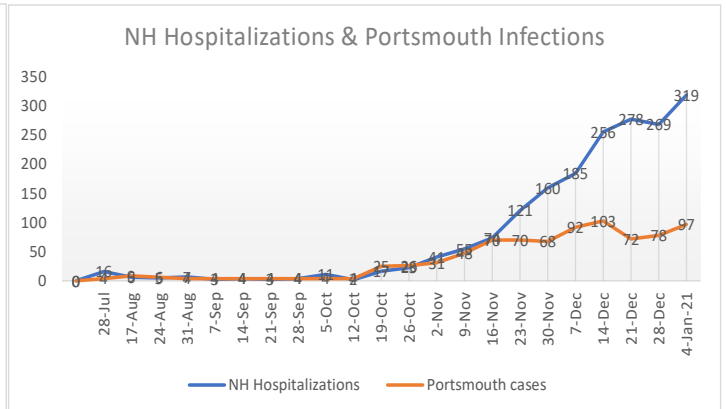
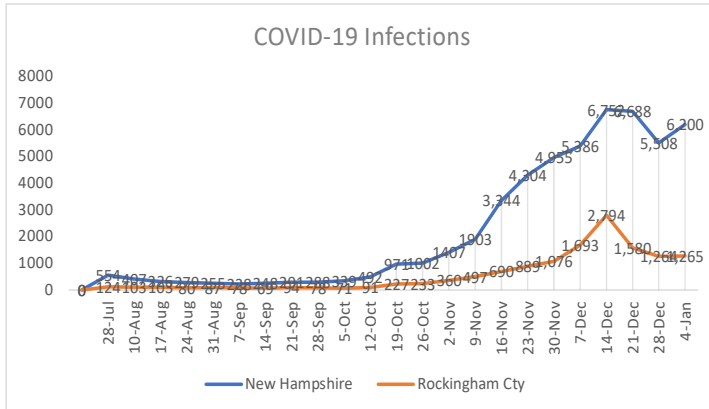
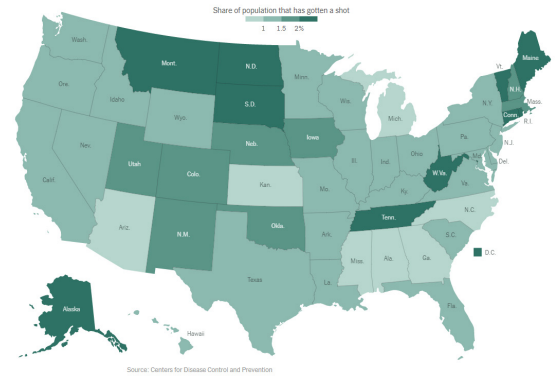


COVID-19 DASHBOARD 1/4/21

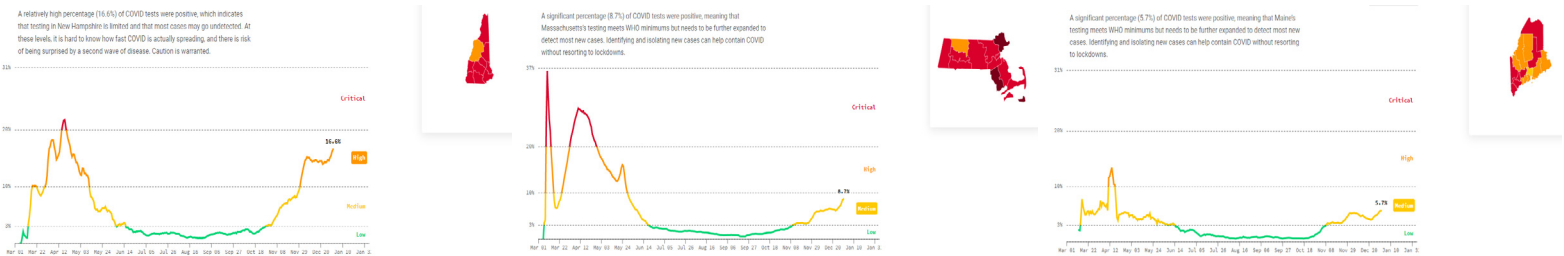
| | This Wk | Last Wk | Cumulative | Deaths |
|---------------------------------------|---------------|--------------|--------------------------------|------------|
| NH Positivity | 10.5% | 7.5% | | |
| Rockingham Positivity | 9.0% | 7.7% | | |
| NH | 6,200 | 5,508 | 47,328 | 781 |
| Rockingham | 1,265 | 1,264 | 11,581 | 142 |
| Portsmouth | 97 | 78 | 728 | |
| Positivity Rockingham County: NH DHHS | | | | |
| NH Vaccinations | 21,181 | 1.6% | 53,675 (doses received) | |

Data/map source: <https://www.nytimes.com/interactive/2020/us/covid-19-vaccine-doses.html>

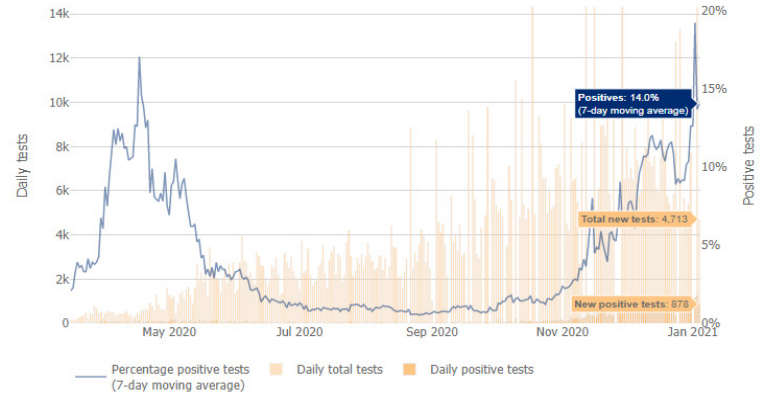
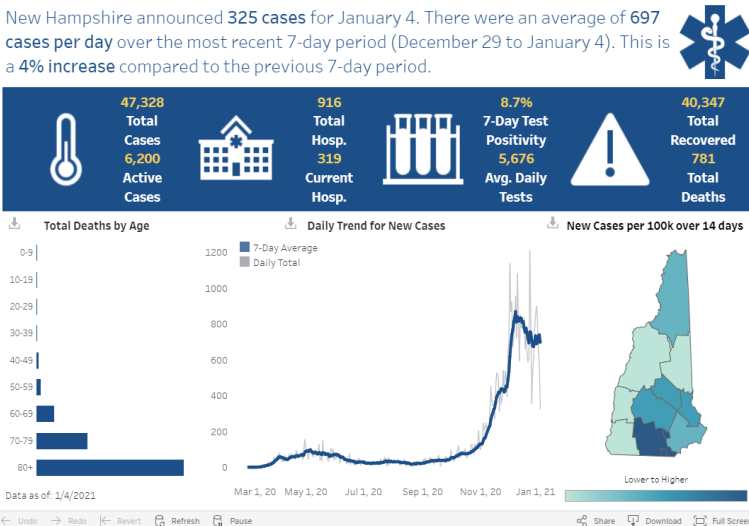


NH & Rockingham County Cases by Week

NH Hospitalizations & Portsmouth Resident Cases



Data and graphs above show are in a new format as the Covid Tracking Project has now merged with the Covid Act Now data tracker that combines data reported by the CDC and the states. For more: <https://covidactnow.org/?s=1488444>



The graph above shows the total daily number of COVID-19 tests reported in NH, and of those tests, how many were positive each day. The trend line in blue shows the average percentage of tests that were positive over the last 7 days.

Note: DHHS changed the map above to show the number of new cases per 100k people over the last 14 days to create shading gradients between counties

Send questions to the Mayor's Blue Ribbon Committee on Health via hotline@cityofportsmouth.com
 Johns Hopkins COVID Tracker: <https://coronavirus.jhu.edu/region/us/new-hampshire>
 NH (interactive map, by town): <https://www.nh.gov/covid19/dashboard/summary.htm>
 US MAP (right) source: <https://www.nytimes.com/interactive/2020/us/coronavirus-us-cases.html#map>
 Current US Hot Spots (at right) Darker shading = more cases. On Nov. 18, the color scale on the hot spots map was expanded to reflect the new record rates of infection. The map was also changed so that areas with very low population density are now shaded.

