

Hanover St Garage – Elevator Access/Shutdown

Timeline

- Pedestrian traffic will have access to enter/exit the elevator on levels 2 & 3 using a walkway connecting the Hanover St stair tower to the elevator starting 4/8/2024.
- The elevator will not be accessible from:
 - Level 1 for one week from 04/15/24-04/21/24
 - Level 2 for one week from 04/22/24-04/26/24
 - The elevator will be fully operational on all but one level at any given time during aforementioned period.

Level 1 – Work Areas between 3/26 to 3/31

Typical Work Area



Note: Elevator accessible on all levels

Level 1 – Work Areas between 4/8 to 4/14

Typical Work Area



Note: Elevator accessible on all levels

Level 1 – Work Areas between 4/22 to 4/26

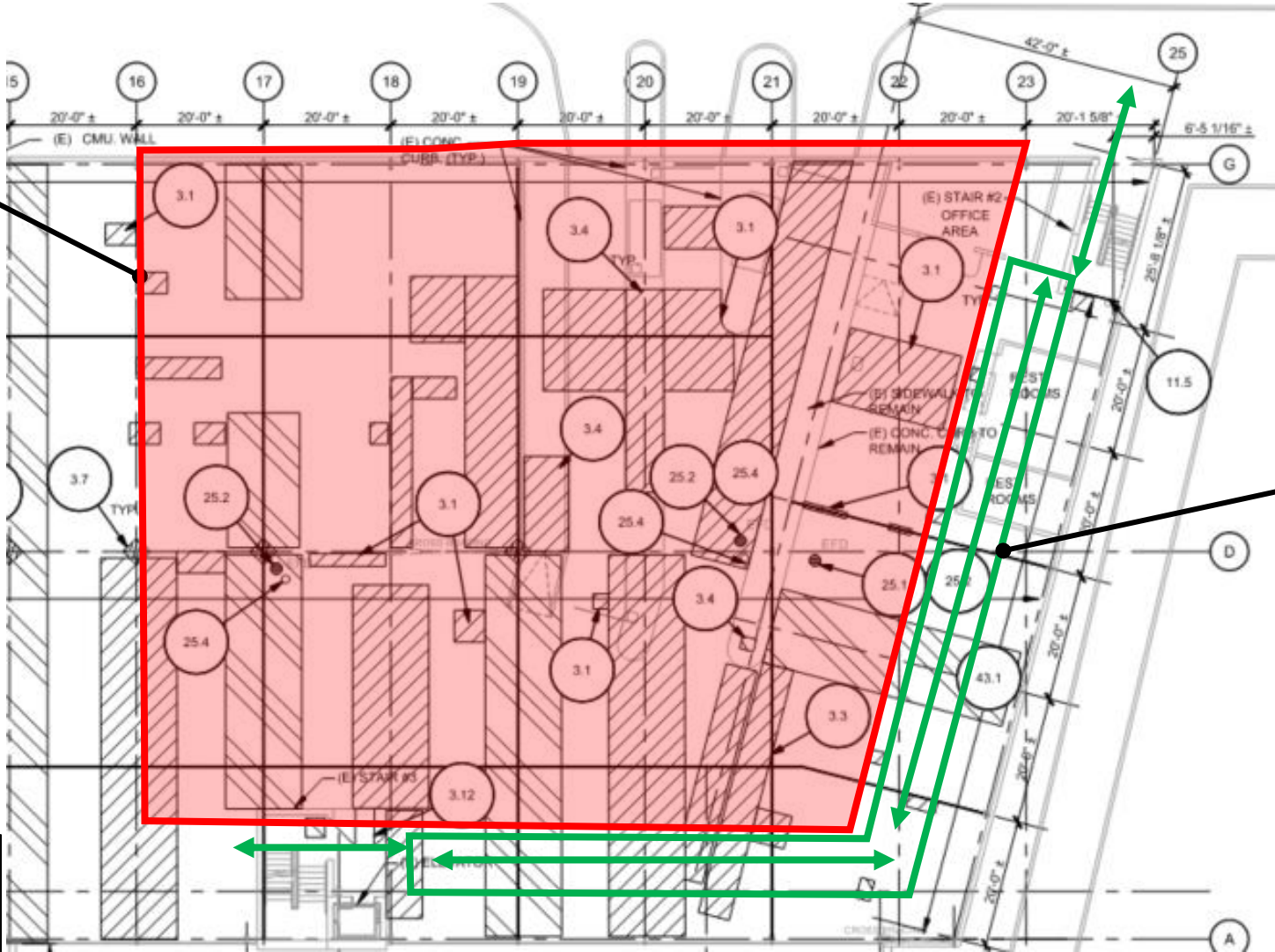
Typical Work Area



Note: No elevator access on level 2

Level 2 – Work Areas between 4/8 to 4/14

Typical Work Area



Temporary Walkway
Between Hanover
St Stair Tower and
Elevator

Note: Elevator
accessible on all levels

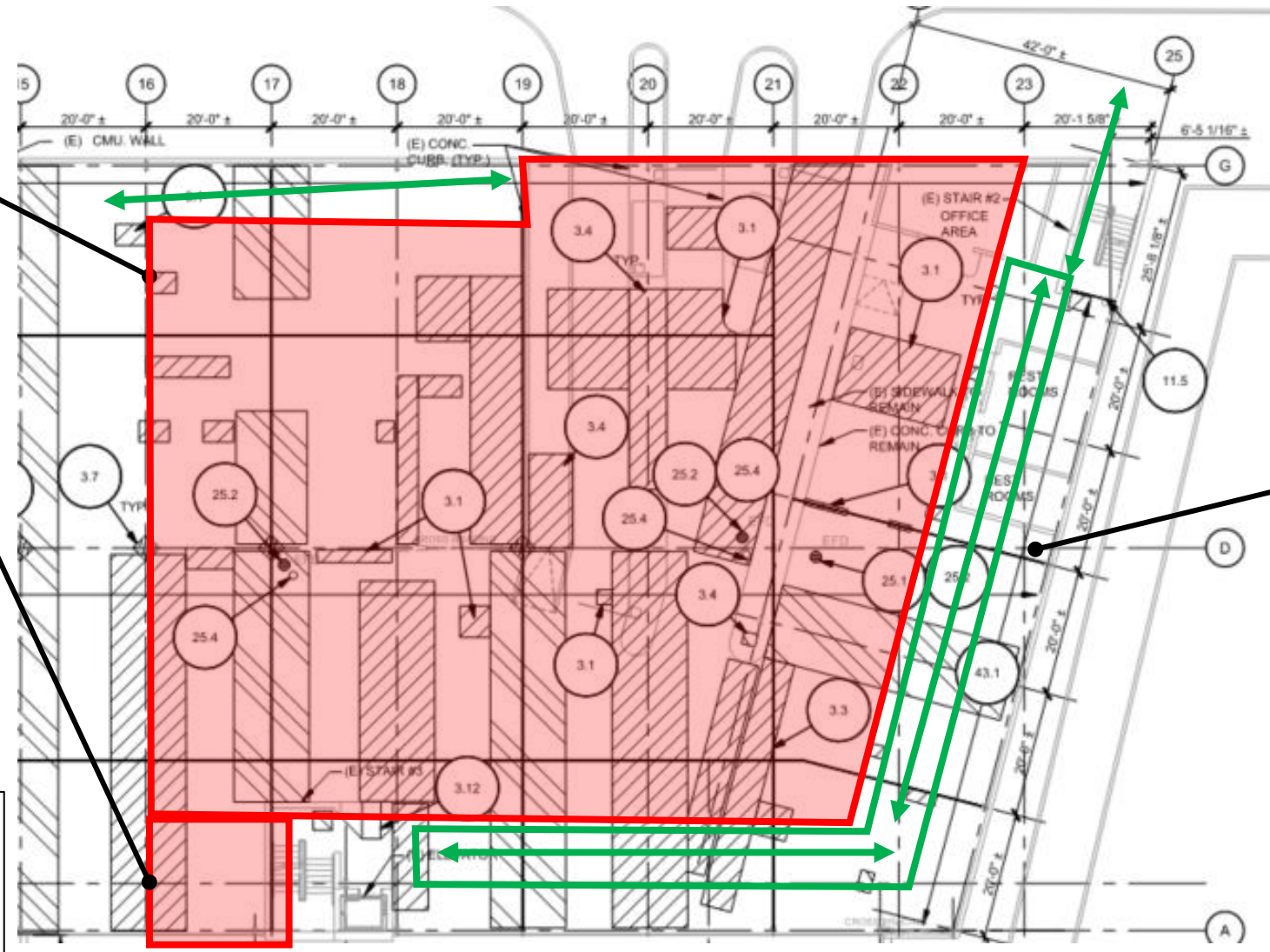
Level 2 – Work Areas between 4/15 to 4/21

Typical Work Area

Additional Work Area for Lintel/New Opening Work

Note: Elevator access closed on level 1 as of 4/15

Temporary Walkway Between Hanover St Stair Tower and Elevator



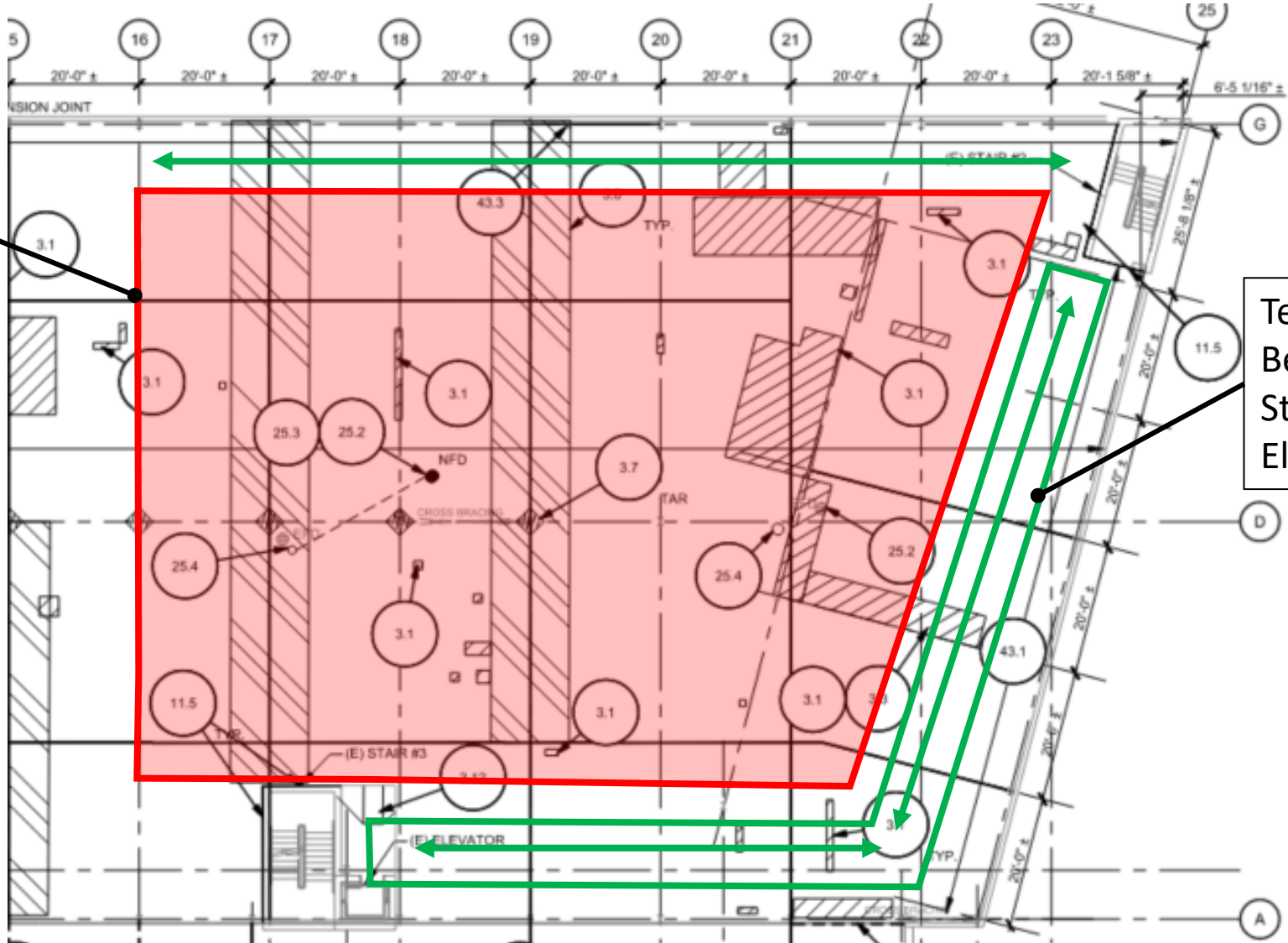
Level 2 – Work Areas between 4/22 to 4/26

Typical Work Area

Additional Work Area for Ramp/Curb Work.
No elevator access on level 2.



Level 3 – Work Areas Between 4/8 to 4/26



Typical Work Area

Temporary Walkway Between Hanover St Stair Tower and Elevator

Note:
Elevator access on level 1 closed between 4/15 to 4/21
Elevator access on level 2 closed between 4/22 to 4/26