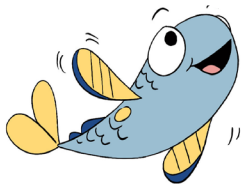




Image: South Mill Pond Dog Park



**PICK UP AFTER YOUR PET, KEEP OUR WATER CLEAN
THINK BLUE! CITY OF PORTSMOUTH DPW STORMWATER DIVISION**
CityofPortsmouth.com/public-works/stormwater



They poop. We scoop.

We love our dogs! But dog waste carries harmful microorganisms that can make our waters unsafe for swimming and drinking (as well as leaving our parks more enjoyable for all).

With an estimated xxxx dogs residing in Portsmouth, that's a lot of waste potentially polluting the waters,

Picking up our dogs' waste and disposing of it properly in provided receptacles in dog parks or in your own trash is a small effort that can make a big difference in keeping our waters clean.

Take the pledge to Scoop the Poop!

**Visit: stateofoureestuaries.org/everydrop/petpledge
or scan the QR code and go straight to the page.**

THINK CLEAN WATER, THINK BLUE!

