

Special Meeting of the Trees and Public Greenery Committee (TPGC)

Regarding Tree removals on Sagamore Rd

9/4/2024 9:00 AM

The decision was made to postpone the tree removals on Sagamore Rd at the last TPGC meeting on August 14, 2024. The purpose of the special meeting is to discuss with Eversource, Northern Tree Service, and Public Works the current work plan. Committee members and residents of the impacted area are encouraged to attend.

Eversource will be using an alley arm, designed to brace a crossarm that is uneven, putting all utility lines over the road. The alley arm will be installed in the area between 635 Sagamore Rd and 749 Sagamore Rd. Most large trees can be pruned to facilitate this feature of the utility pole, though other specific factors need to be considered regarding any tree removal.

Listed below are the trees marked for removal, **sorted by removal notice tag number located on the green removal notice form** (from the top of Sagamore Rd, downward). All trees are located on City of Portsmouth right-of-way (ROW) property.

#1: 635 Sagamore Rd, 1 red oak. This oak is a large multi-stem tree showing a history of clearance pruning. Overall, the tree looks generally healthy. It is likely some roots were damaged due to the construction of the new sidewalk.

#2: 749 Sagamore Rd, 1 red oak. This oak is a large multi-stem tree showing a history of clearance pruning. Overall, the tree looks generally healthy. There is a bit of included bark between the two main stems of the tree, which at this point is a minor structural concern. It is likely some roots were damaged due to the construction of the new sidewalk.

#3: 749 Sagamore Rd, 1 red oak. This oak is a large single-stem tree showing a history of clearance pruning. It is likely some roots were damaged due to the construction of the new sidewalk.

#4: 749 Sagamore Rd, 1 red oak. This oak is a large single-stem tree showing a history of clearance pruning. Some roots were damaged due to the construction of the new sidewalk.

This tree is bowed with most of its canopy positioned away from the road. The damaged roots may affect the structural stability of the tree due to weight distribution.

#5: 749 Sagamore Rd, 1 red oak. This is a small single-stem tree showing a history of clearance pruning. Some roots were damaged due to the construction of the new sidewalk. The base of the tree displays cavities and mechanical damage. The crown of the tree looks healthy, but there are underlying issues at the base of the tree.

#6: 749 Sagamore Rd, 1 red oak. This is a medium multi-stem tree showing a history of clearance pruning. Some roots were damaged due to the construction of the new sidewalk. A third stem was removed from this tree, and between all stem attachment points is decomposing material and moisture. This may have introduced elements of decay into the base of the tree, which suggests compromised tree structure.

#7: 749 Sagamore Rd, 1 white pine. This is a small single-stem tree. Overall, a healthy-looking tree despite improper pruning cuts.

#8: 749 Sagamore Rd, 1 black cherry. This is a small single-stem tree. Overall, a healthy-looking tree with typical dieback and appearance.

#9: 749 Sagamore Rd, 1 white pine. This is a small single-stem tree with an overall healthy appearance.

#10: 749 Sagamore Rd, 1 red oak. This is a small single-stem tree with an overall healthy appearance.

#11: ROW opposite Cliff Rd, 1 red oak. This is a large single-stem tree with an overall healthy appearance. Due to its position at the edge of the wood line, much of the canopy of this tree is growing toward the road, near the utility lines.

#12: ROW opposite Cliff Rd, 1 white pine. This is a small single-stem tree with an overall healthy appearance.

#13: ROW opposite Cliff Rd, 1 white pine. This is a small single-stem tree with an overall healthy appearance.

#14: ROW opposite Cliff Rd, 1 white pine. This is a small single-stem tree with an overall healthy appearance.

#15: ROW opposite Cliff Rd, 1 white pine. This is a small single-stem tree with an overall healthy appearance.

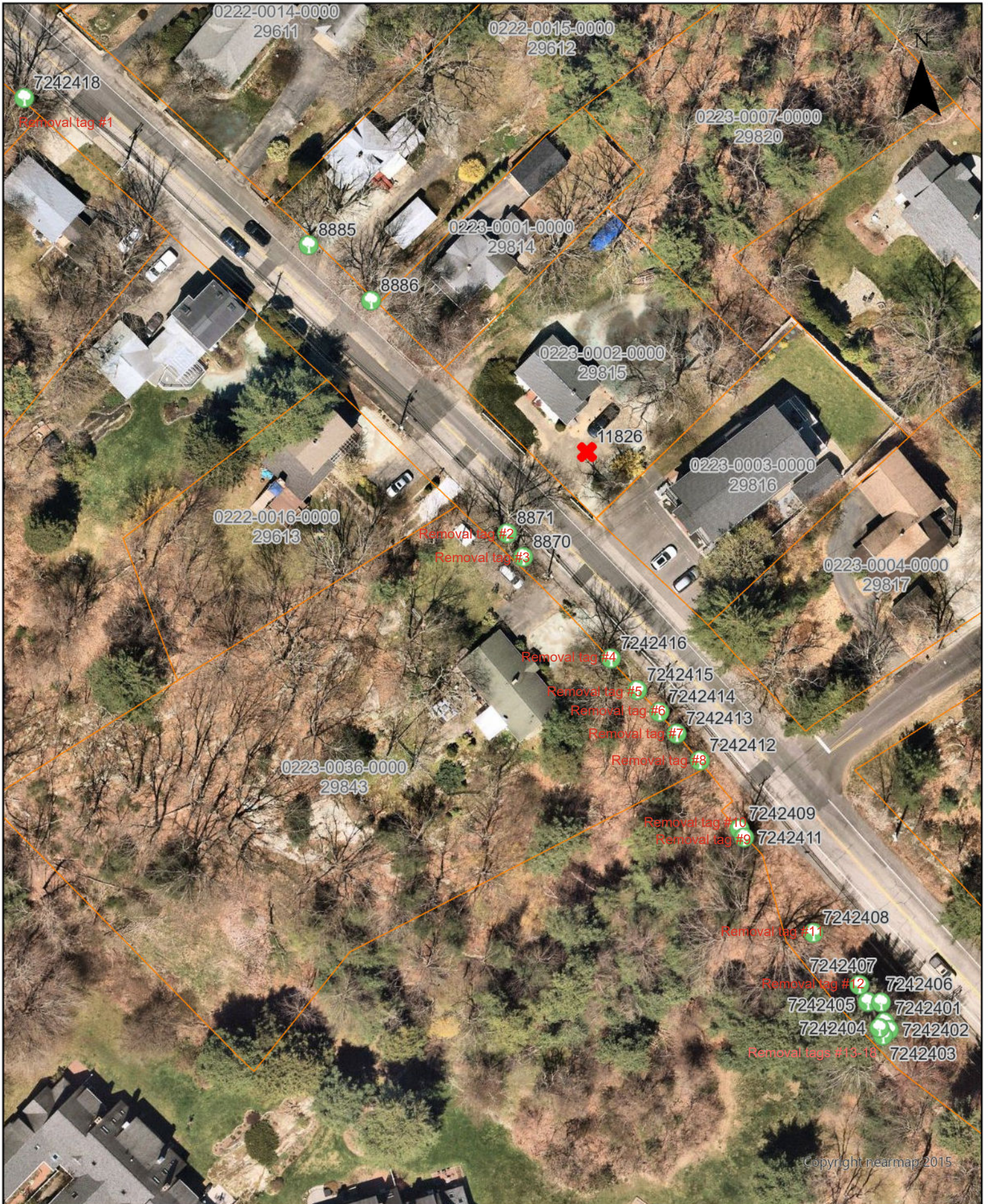
#16: ROW opposite Cliff Rd, 1 gray birch. This is a small single-stem tree. Much of the canopy has oriental bittersweet intertwined with branches. There is limited foliage due to the proximity of the surrounding pine. The tree is leaning toward the road.

#17: ROW opposite Cliff Rd, 1 white pine. This is a small single-stem tree with an overall healthy appearance.

#18: ROW opposite Cliff Rd, 1 white pine. This is a small single-stem tree with an overall healthy appearance.

treid	location	status	comname	scientificname	lastassess	type	cond	diameter	height	multistem	defect_1	defect_2	defect_3	notes
8870	749 SAGAMORE AVE	Present	Red Oak	Quercus rubra	7/24/2024	Tree	good	12 - 24	41' - 60'	No				History of clearance pruning; Removal tag #3
8871	749 SAGAMORE AVE	Present	Red Oak	Quercus rubra	7/24/2024	Tree	good	36 - 48	41' - 60'	Yes	Incl Bark			History of clearance pruning; Removal tag #2
7242401	Sagamore Rd	Present	White Pine	Pinus strobus	7/24/2024	Tree	good	6 - 12	21' - 40'	No				Removal tag #18
7242402	Sagamore Rd	Present	White Pine	Pinus strobus	7/24/2024	Tree	good	6 - 12	21' - 40'	No				Removal tag #17
7242403	Sagamore Rd	Present	White Pine	Pinus strobus	7/24/2024	Tree	good	6 - 12	21' - 40'	No				Removal tag #15
7242404	Sagamore Rd	Present	Gray Birch	Betula populifolia	7/24/2024	Tree	good	6 - 12	21' - 40'	No	Lean			Removal tag #16
7242405	Sagamore Rd	Present	White Pine	Pinus strobus	7/24/2024	Tree	good	12 - 24	21' - 40'	No				Removal tag #14
7242406	Sagamore Rd	Present	White Pine	Pinus strobus	7/24/2024	Tree	good	6 - 12	< 20'	No				Removal tag #13
7242407	Sagamore Rd	Present	White Pine	Pinus strobus	7/24/2024	Tree	good	6 - 12	21' - 40'	No				Removal tag #12
7242408	Sagamore Rd	Present	Red Oak	Quercus rubra	7/24/2024	Tree	good	12 - 24	21' - 40'	No	Lean			Removal tag #11
7242409	749 Sagamore Rd	Present	Red Oak	Quercus rubra	7/24/2024	Tree	good	6 - 12	21' - 40'	No				Removal tag #10
7242411	749 Sagamore Rd	Present	White Pine	Pinus strobus	7/24/2024	Tree	good	6 - 12	< 20'	No				Removal tag #9
7242412	749 Sagamore Rd	Present	Black Cherry	Prunus serotina	7/24/2024	Tree	good	6 - 12	< 20'	No				Removal tag #8
7242413	749 Sagamore Rd	Present	White Pine	Pinus strobus	7/24/2024	Tree	good	< 6	< 20'	No				Removal tag #7
7242414	749 Sagamore Rd	Present	Red Oak	Quercus rubra	7/24/2024	Tree	fair	36 - 48	41' - 60'	Yes	Basal Wound	Mech Damage		History of clearance pruning; Removal tag #6
7242415	749 Sagamore Rd	Present	Red Oak	Quercus rubra	7/24/2024	Tree	fair	6 - 12	21' - 40'	No	Cavities	Basal Wound	Mech Damage	History of clearance pruning; Removal tag #5
7242416	749 Sagamore Rd	Present	Red Oak	Quercus rubra	7/24/2024	Tree	good	12 - 24	41' - 60'	No	Lean	Mech Damage		Removal tag #4
7242418	635 Sagamore Rd	Present	Red Oak	Quercus rubra	7/24/2024	Tree	good	> 48	41' - 60'	Yes				History of clearance pruning; Removal tag #1

Trees on Sagamore Rd



0 125 250 500 Feet



Removal 1



Removal 2 & 3



Removal 4



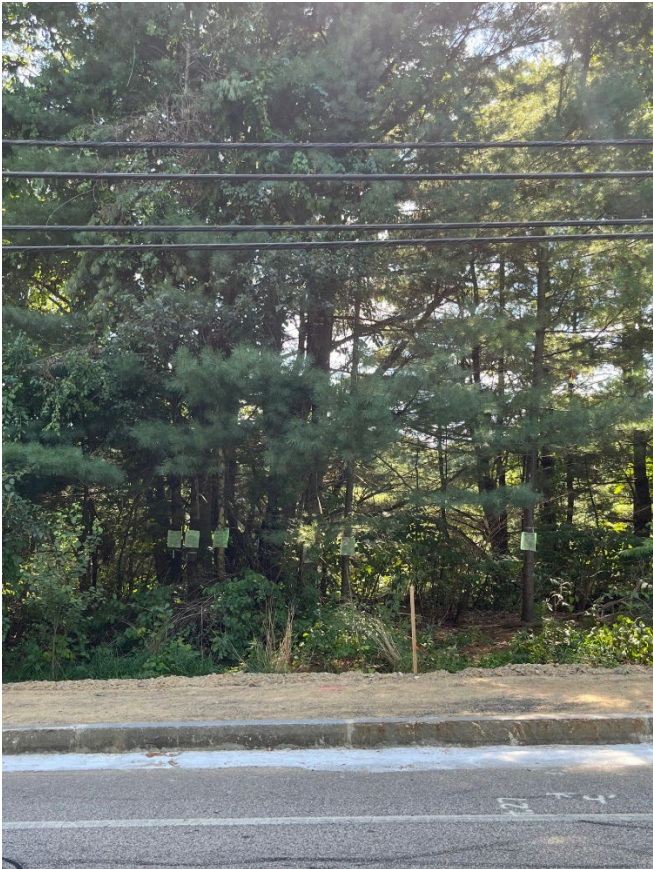
Removal 5, 6, 7, & 8



Removal 9 & 10



Removal 11



Removal 12, 13, 14, 15, 16, 17 & 18