

Community Policing Facility Update

- How we are addressing what we have heard
- Concurrently, working to evaluate staffing needs with an independent consultant
- Multiple options have been reviewed and eliminated for cost and functionality concerns
- These are massing exercises to test the fit of the building on the site, not design drawings
- Next steps



What We Heard

1. Meet the needs of Police Department
2. Stay within the total project budget of \$42.2M as defined in the Capital Improvement Plan
3. Locate on the Municipal Campus
4. Utilize as much of the existing police facility as possible
5. Minimize the impact to the viewshed



Staffing Needs & Site Options

Staffing Needs

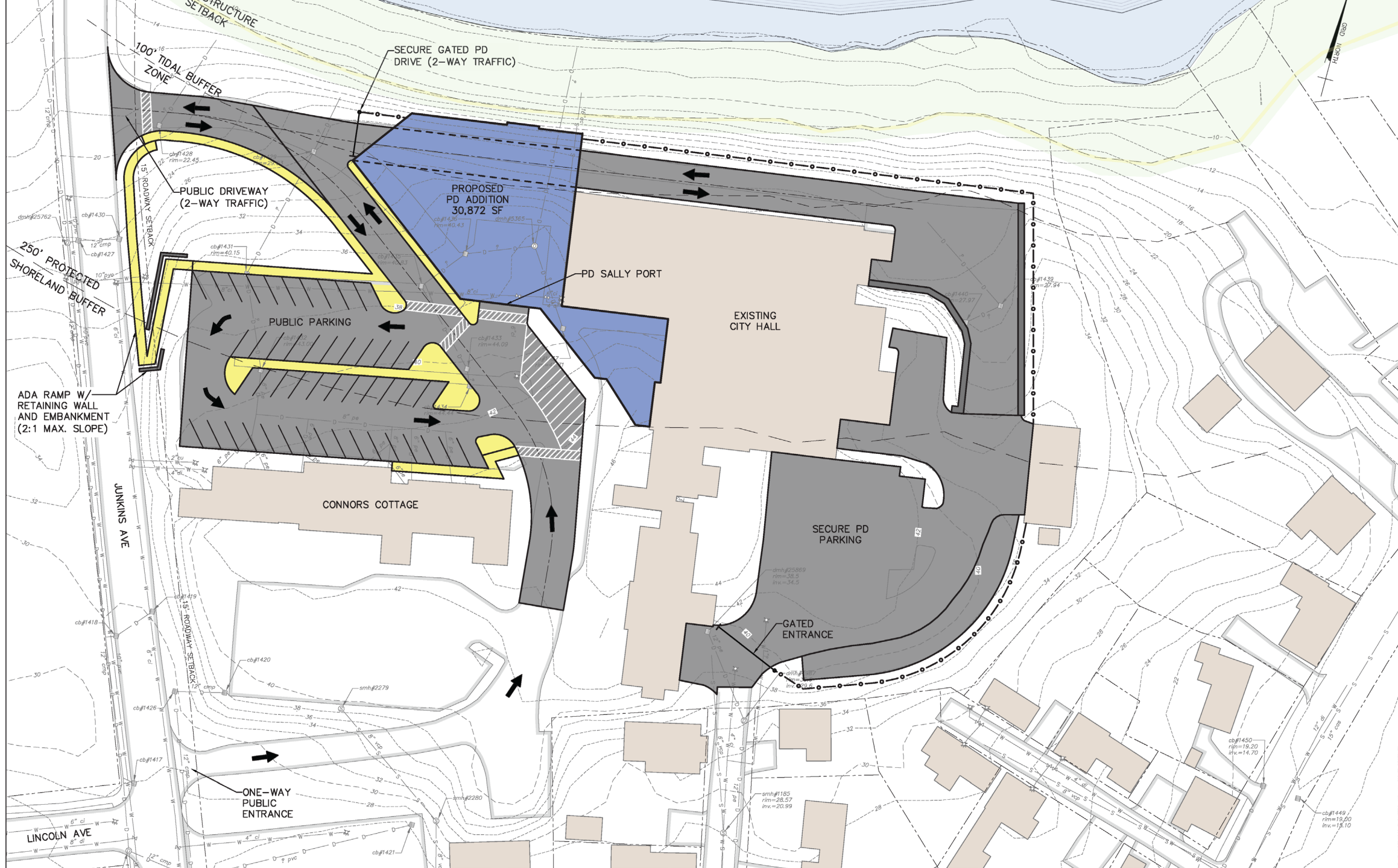
Evaluating staffing needs with an independent consultant to validate or adjust the Space Needs Assessment.

Other On-Site Options Reviewed

Options in other areas of the Municipal Complex were tested and rejected due to concerns related to budget and functionality.

Previously rejected greenfield sites due to cost





STRUCTURE SETBACK
 100' TIDAL BUFFER ZONE

SECURE GATED PD DRIVE (2-WAY TRAFFIC)

PUBLIC DRIVEWAY (2-WAY TRAFFIC)

PROPOSED PD ADDITION 30,872 SF

PD SALLY PORT

EXISTING CITY HALL

PUBLIC PARKING

250' PROTECTED SHORELAND BUFFER

ADA RAMP W/ RETAINING WALL AND EMBANKMENT (2:1 MAX. SLOPE)

CONNORS COTTAGE

SECURE PD PARKING

GATED ENTRANCE

ONE-WAY PUBLIC ENTRANCE

LINCOLN AVE

ISSUE	APPROVAL	DATE

Drawn/Chk.	RMG
Designed	
Checked	
Approved	
Date	9-19-24
Book No.	
Project No.	2880L
Dwg. ID	900_0805.dwg
Scale	

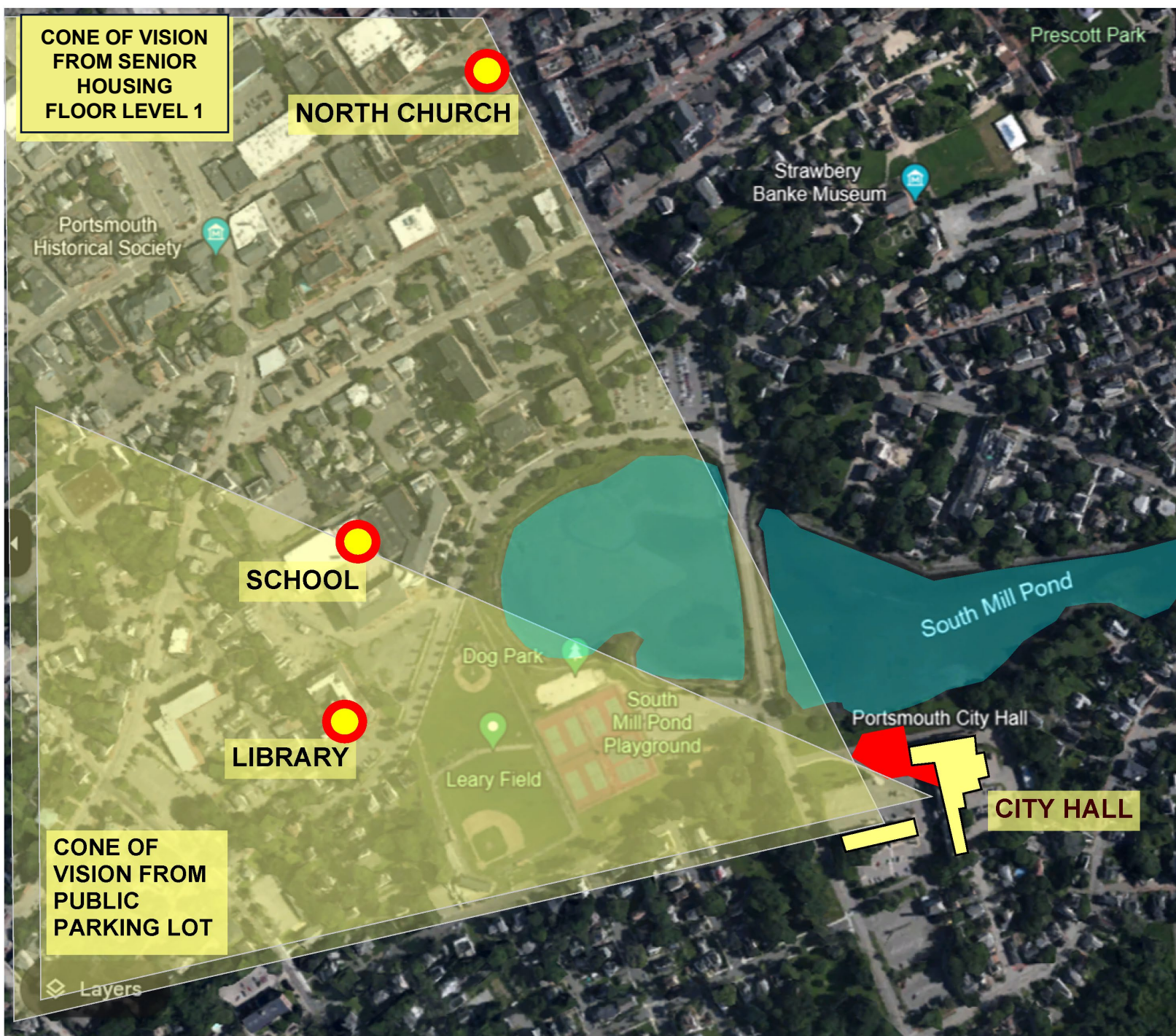
DRAFT
 9-19-2024
 NOT FOR CONSTRUCTION

Underwood Engineers
 25 Vaughn Mall, Portsmouth, N.H. 03801
 Tel. 603-436-6192 Fax. 603-431-4733

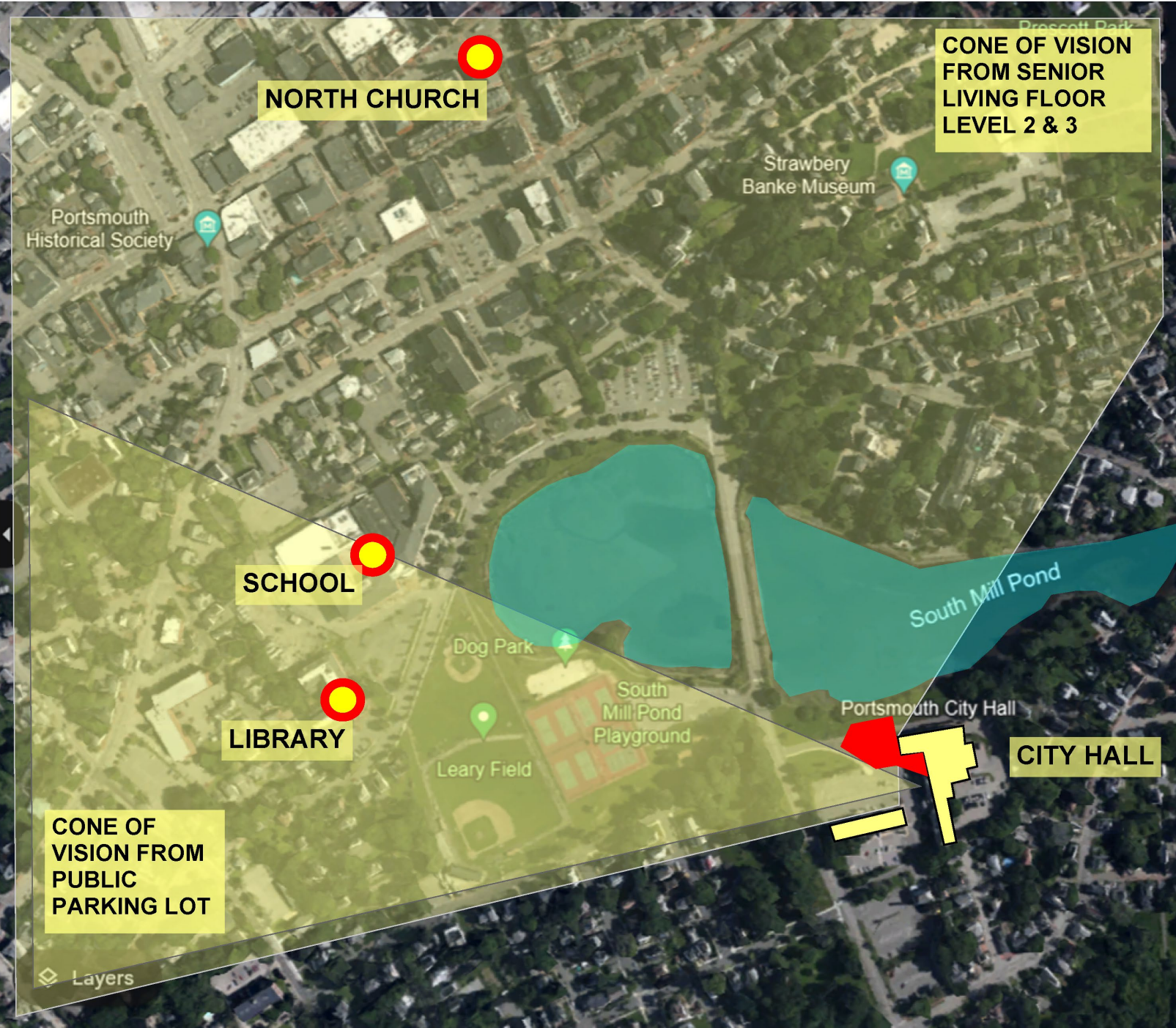
CONCEPTUAL SITE PLAN
 COMMUNITY POLICING FACILITY
 CITY OF PORTSMOUTH
 PORTSMOUTH, NEW HAMPSHIRE

NOT AT UNDERWOOD ENGINEERS, INC. ALL RIGHTS RESERVED

View Impacts



View Impacts



Previous



Current



Budget

PORTSMOUTH COMMUNITY POLICING FACILITY - HYBRID C6-B OPTION

CONCEPTUAL BUDGET

September 17, 2024

SITE DEVELOPMENT	\$	3,495,000
BUILDING CONSTRUCTION (Total Square Footage 49,457)	\$	28,282,000
SUBTOTAL BUILDING/SITE DEVELOPMENT	\$	31,777,000
DESIGN & CONSTRUCTION CONTINGENCY - 10% of the Subtotal Building/Site Development	\$	3,178,000
SOFT COST ITEMS LISTED BELOW - 20% of the Building/Site Development/Contingency	\$	6,991,000
TOTAL COMMUNITY POLICING PROJECT COST	\$	41,946,000

Conceptual PD budget estimate is based on anticipated construction costs in Q2 2025

Next Steps

- Complete the staffing needs study and report back to City Council
- Advance design to schematic (30%) design with a basic rendering
- Update budget estimates
- Present to Land Use Boards
- Anticipated bond authorization for additional design funds in 2025

