

PROJECT

PEASE WASTEWATER TREATMENT FACILITY REHABILITATION

135 Corporate Drive
Portsmouth, NH 03801

OWNER

CITY OF PORTSMOUTH NEW HAMPSHIRE

DEPARTMENT OF PUBLIC WORKS
680 Peverly Hill Road
Portsmouth, NH 03801
603-427-1530 tel 603-427-1539 fax
http://www.cityofportsmouth.com/publicworks

ENGINEER

AECOM TECHNICAL SERVICES, INC.
250 APOLLO DRIVE
CHELMSFORD, MA 01824
PHONE: (978) 905-2100
www.aecom.com

CONSULTANTS

HVAC, PLUMBING, FIRE PROTECTION
Petersen Engineering, INC
PO Box 4516
Portsmouth, NH 03802
603-436-2335 tel
https://www.petersenengineering.com

STORMWATER DESIGN
Altus Engineering
133 Court Street
Portsmouth, NH 03801
603-433-2335 tel
https://www.altus-eng.com

REGISTRATION

90% SUBMITTAL PRELIMINARY COPY

NOTE: This document is preliminary only and is not intended for any purpose except review and comment by the owner and its agents.

ISSUE/REVISION

I/R	DATE	DESCRIPTION

PROJECT NUMBER

60693508

Designed By:	SM
Drawn By:	SM
Dept Check:	KC
Proj Check:	EM
Date:	JANUARY 2025
Scale:	1/4" = 1'-0"

DISCIPLINE

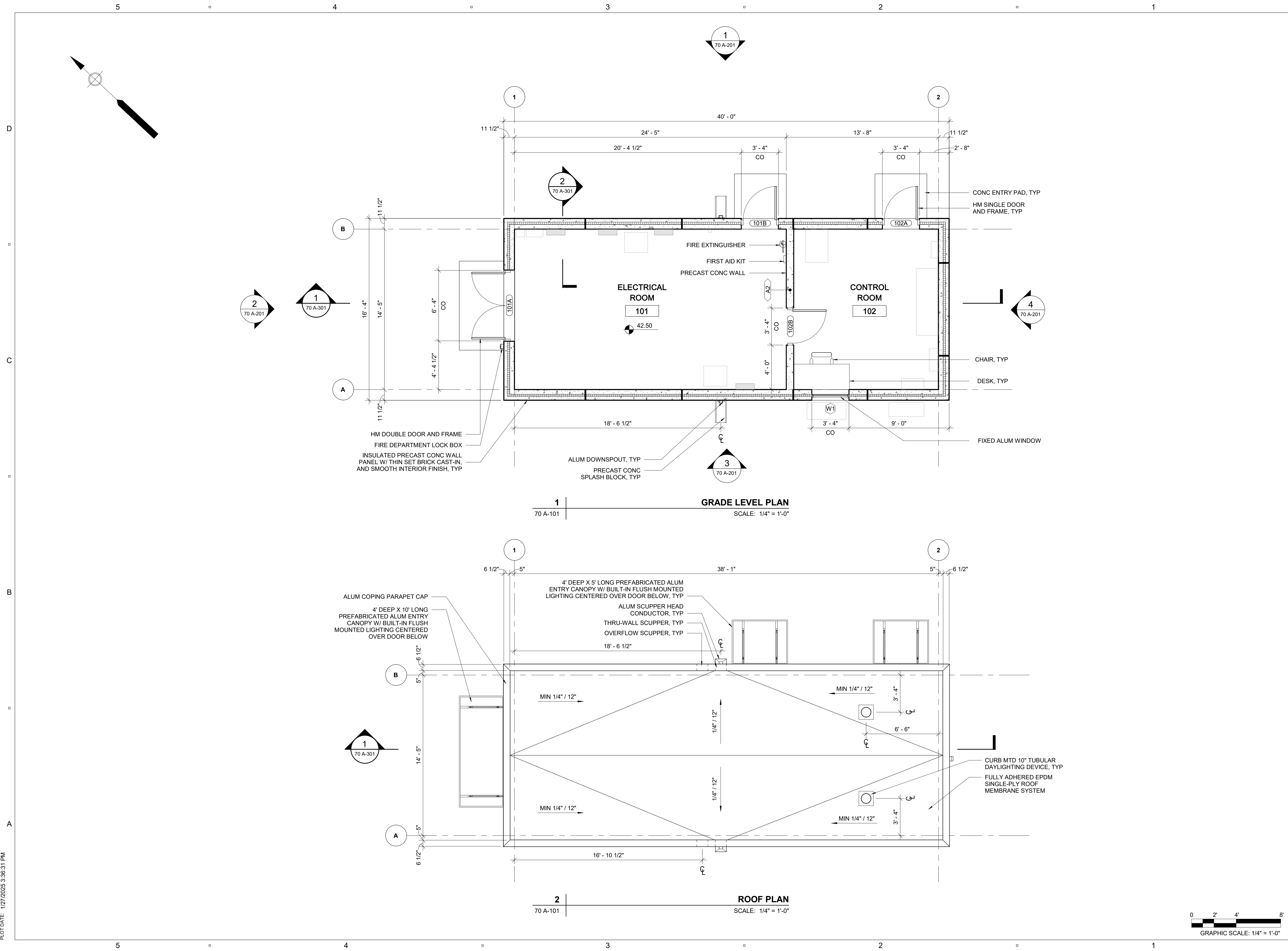
ARCHITECTURAL

SHEET TITLE

ELECTRICAL/CONTROL BUILDING - PLANS

SHEET NUMBER

70 A-101



PATH/FILENAME: AutodesK Docs/60693508-Pease WWTFF Rehabilitation/70-A-Electrical & Control
LAST UPDATE: 1/27/2025 3:36:31 PM
PLOT DATE: 1/27/2025 3:36:31 PM

I/R	DATE	DESCRIPTION

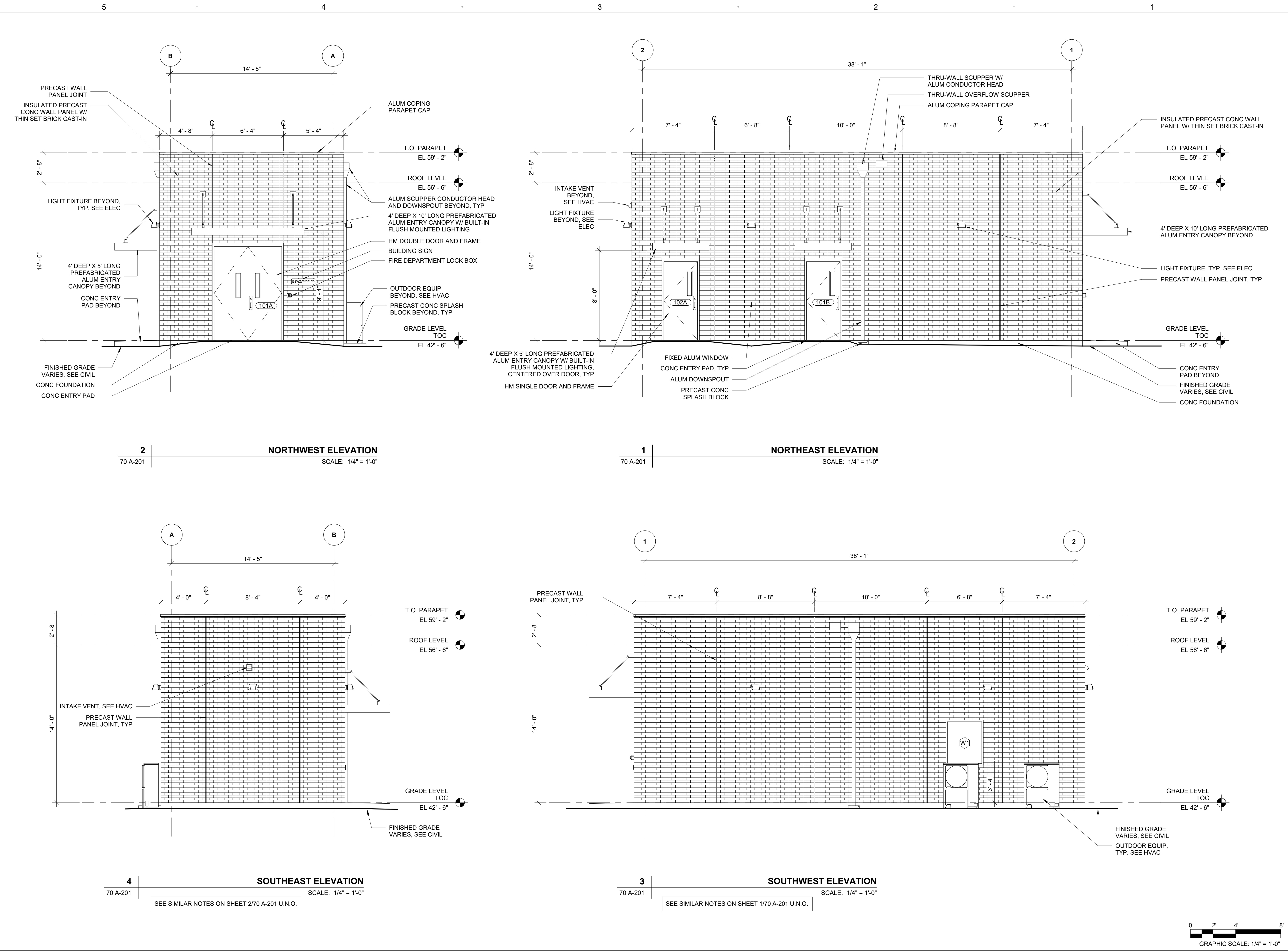
60693508

Designed By:	SM
Drawn By:	SM
Dept Check:	KC
Proj Check:	EM
Date:	JANUARY 2025
Scale:	1/4" = 1'-0"

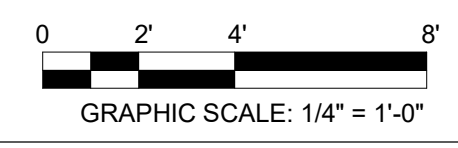
ARCHITECTURAL
 SHEET TITLE

ELECTRICAL/CONTROL BUILDING - BUILDING ELEVATIONS
 SHEET NUMBER

70 A-201



PATH: \\FLENWME: Autodesk Docs:60693508-Pease WWTFF Rehabilitation\70-A-Electrical & Control
 LAST UPDATE: 1/27/2025 3:36:32 PM
 PLOT DATE: 1/27/2025 3:36:32 PM



SEE SIMILAR NOTES ON SHEET 2/70 A-201 U.N.O.

SEE SIMILAR NOTES ON SHEET 1/70 A-201 U.N.O.