

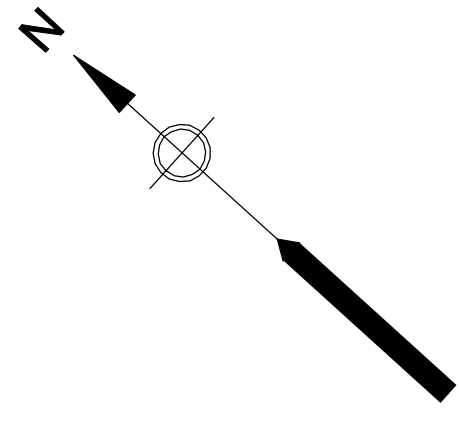
5

4

3

2

1



NOTES:

- 1. CONCRETE PAD FOR ELECTRIC VEHICLE (EV) CHARGER SHALL BE SIZED FOR FUTURE CHARGER BASED ON CHARGEPOINT STANDARD DUAL PORT CT4021.
- 2. PROVIDE BUILDING WITH LIGHTNING PROTECTION IN ACCORDANCE WITH SPECIFICATION SECTION 16601.
- 3. REFER TO DUCTBANK SCHEDULES ON SHEET 00 E-007 FOR DUCTBANK SECTIONS.



PROJECT

PEASE WASTEWATER TREATMENT FACILITY REHABILITATION

135 Corporate Drive
Portsmouth, NH 03801

OWNER

CITY OF PORTSMOUTH
NEW HAMPSHIRE

DEPARTMENT OF PUBLIC WORKS
680 Peverly Hill Road
Portsmouth, NH 03801
603-427-1530 tel 603-427-1539 fax
http://www.cityofportsmouth.com/publicworks

ENGINEER

AECOM TECHNICAL SERVICES, INC.
250 APOLLO DRIVE
CHELMSFORD, MA 01824
PHONE: (978) 905-2100
www.aecom.com

CONSULTANTS

HVAC, PLUMBING, FIRE PROTECTION
Petersen Engineering, INC
PO Box 4516
Portsmouth, NH 03802
603-436-4233 tel
https://www.petersenengineering.com

STORMWATER DESIGN
Altus Engineering
133 Court Street
Portsmouth, NH 03801
603-433-2335 tel
https://www.altus-eng.com

REGISTRATION

90% SUBMITTAL
PRELIMINARY COPY

NOTE: This document is preliminary only and is not intended for any purpose except review and comment by the owner and its agents.

ISSUE/REVISION

I/R	DATE	DESCRIPTION

PROJECT NUMBER

60693508

Designed By: JD

Drawn By: MS

Dept Check: YR

Proj Check: EM

Date: JANUARY 2025

Scale: NONE

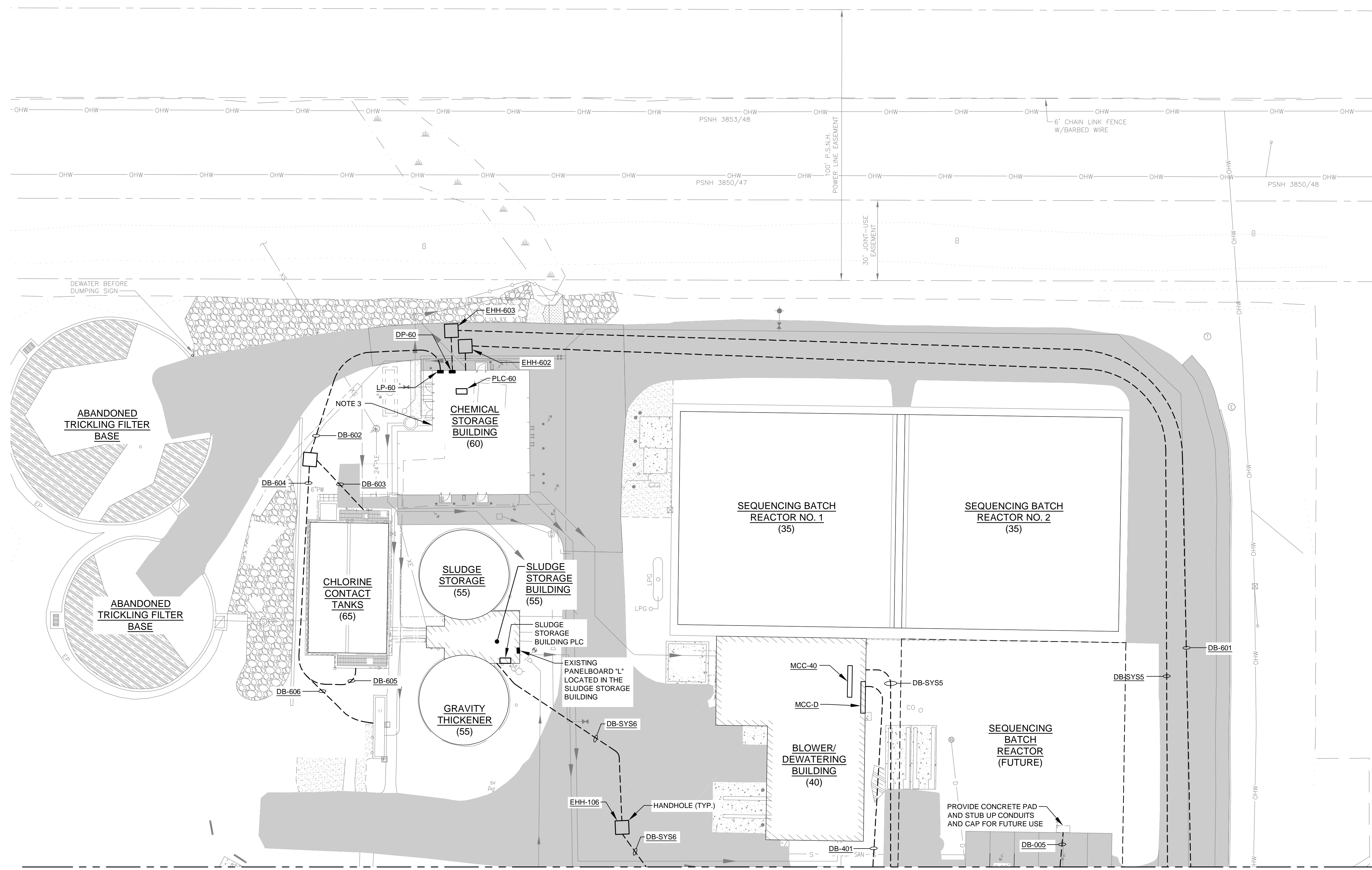
DISCIPLINE

ELECTRICAL
SHEET TITLE

ELECTRICAL SITE PLAN I
(BID ALT)

SHEET NUMBER

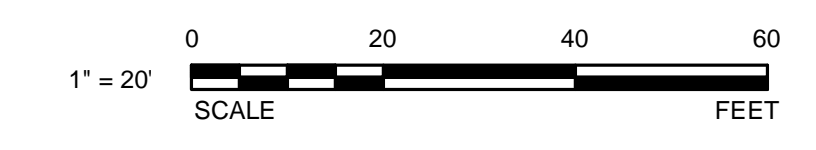
00 E-002A



MATCHLINE A-A FOR CONTINUATION SEE SHEET 00 E-003A

ELECTRICAL SITE POWER PLAN I

SCALE: 1" = 20'-0"



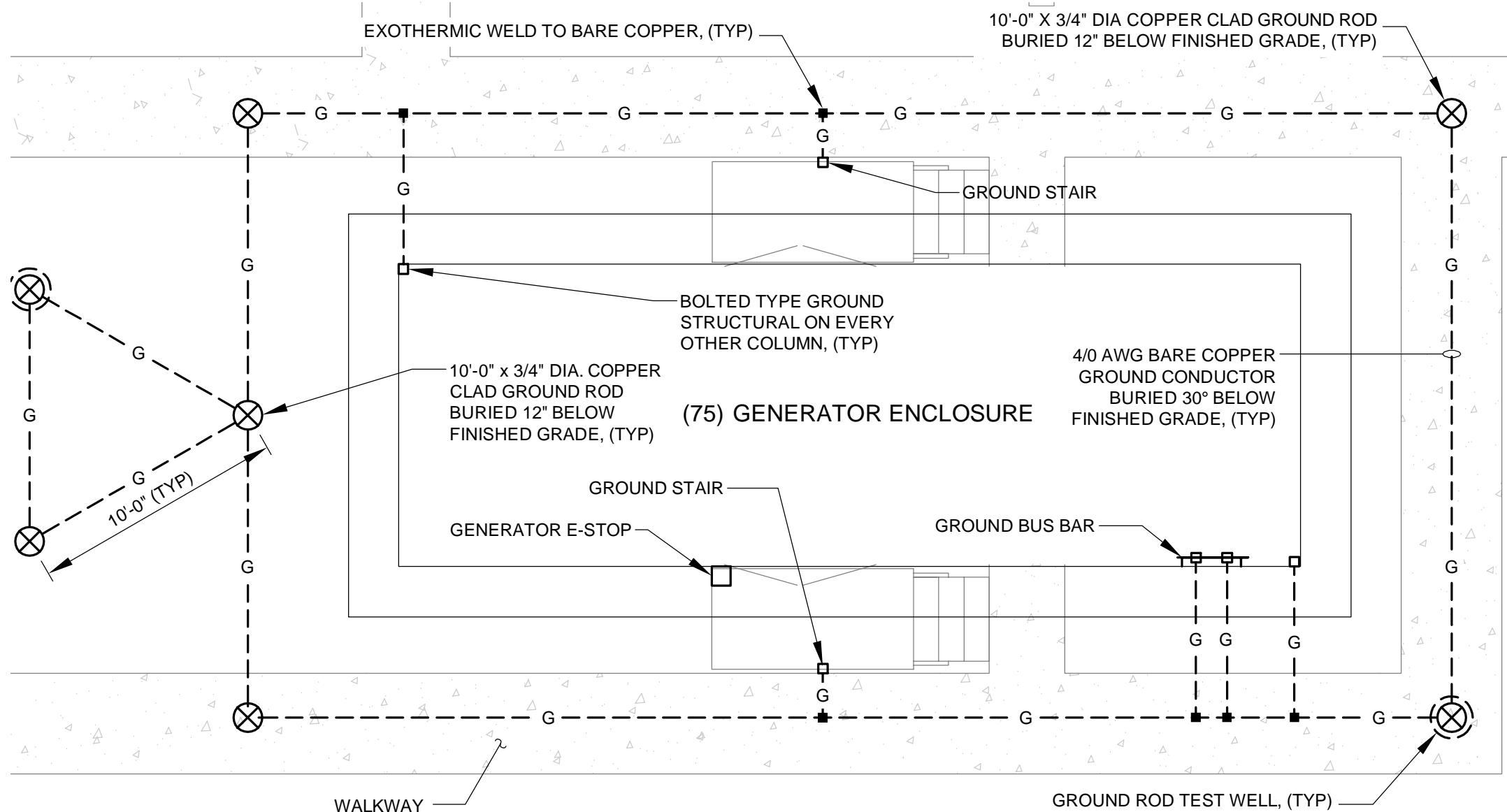
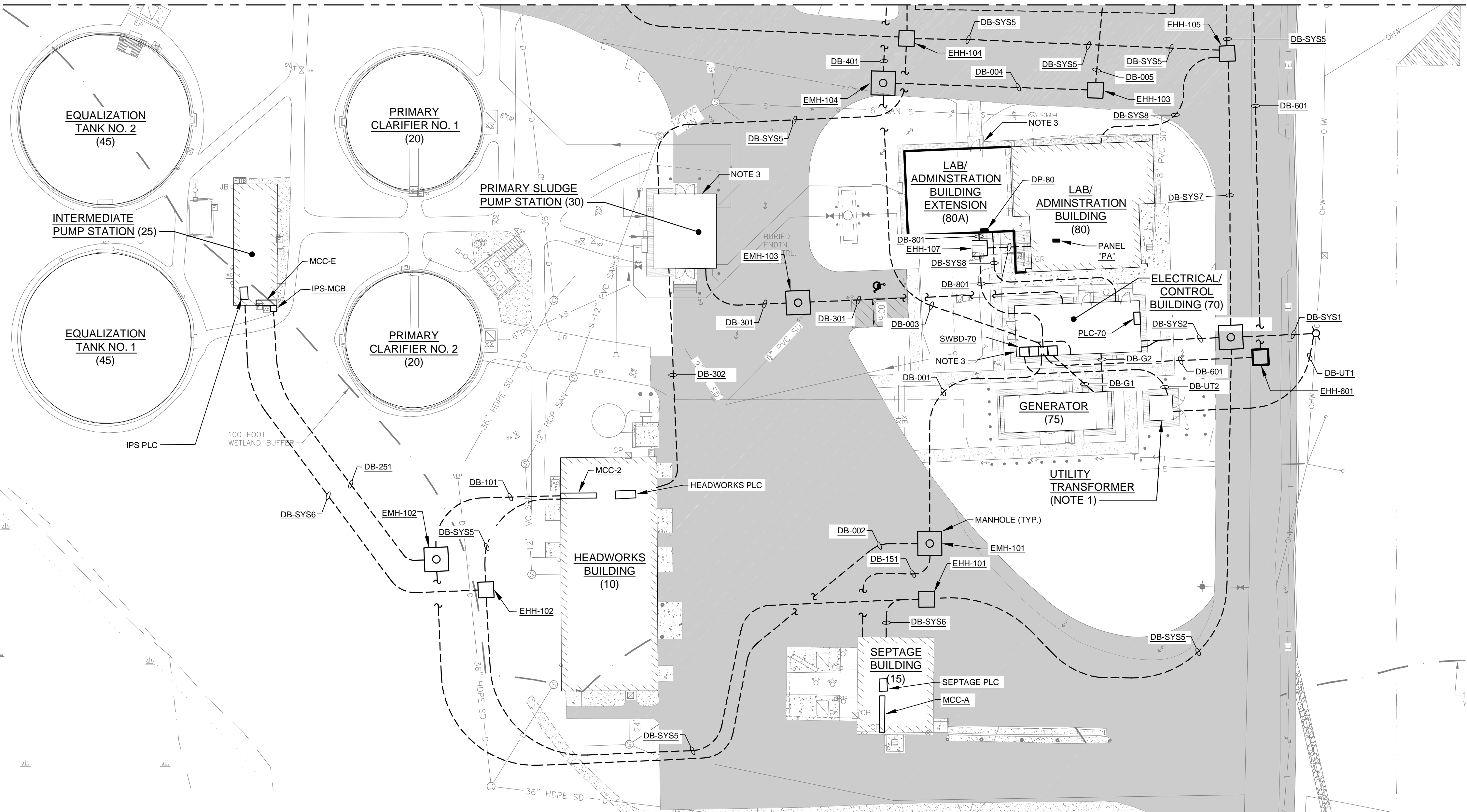
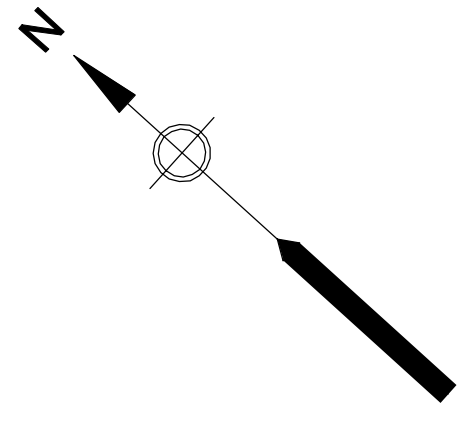
PATH: I:\PROJECTS\2025\02\00 E-002A\DWG\00 E-002A.DWG
LAST UPDATE: Monday, February 3, 2025 10:14:14 AM
PLOT DATE: Monday, February 3, 2025 10:15:17 AM

I/R	DATE	DESCRIPTION

60693508

Designed By:	JD
Drawn By:	MS
Dept Check:	YR
Proj Check:	EM
Date:	JANUARY 2025
Scale:	NONE

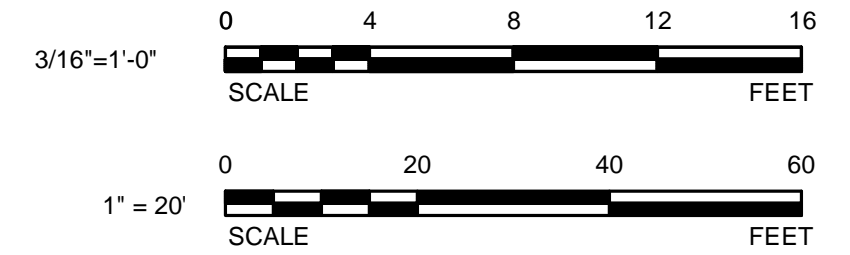
MATCHLINE A-A FOR CONTINUATION SEE SHEET 00 E-002A



GENERATOR GROUNDING PLAN
 SCALE: 3/16" = 1'-0"

ELECTRICAL SITE POWER PLAN II
 SCALE: 1" = 20'-0"

- NOTES:**
1. GROUNDING FOR UTILITY TRANSFORMER SHALL BE IN ACCORDANCE WITH ELECTRIC UTILITY (EVERSOURCE) REQUIREMENTS.
 2. PROVIDE BUILDING WITH LIGHTNING PROTECTION IN ACCORDANCE WITH SPECIFICATION SECTION 16601.
 3. REFER TO DUCTBANK SCHEDULES ON SHEET 00 E-007 FOR DUCTBANK SECTIONS.



PATH: \\S:\STEWART\TMC\ACCOM\60693508\PEASE WWTF REHABILITATION\PROJECT FILES\010-CAD_BIM\25-SHEETS\00 E-003A.DWG
 LAST UPDATE: Monday, February 3, 2025 10:14:43 AM
 PLOT DATE: Monday, February 3, 2025 10:15:21 AM