

MATCHLINE FOR CONTINUATION, SEE SHEET 00 C-108



PROJECT
PEASE WASTEWATER TREATMENT FACILITY REHABILITATION
 135 Corporate Drive
 Portsmouth, NH 03801

OWNER
CITY OF PORTSMOUTH NEW HAMPSHIRE
 DEPARTMENT OF PUBLIC WORKS
 680 Peverly Hill Road
 Portsmouth, NH 03801
 603-427-1530 tel 603-427-1539 fax
<http://www.cityofportsmouth.com/publicworks>

ENGINEER
 AECOM TECHNICAL SERVICES, INC.
 250 APOLLO DRIVE
 CHELMSFORD, MA 01824
 PHONE: (978) 905-2100
www.aecom.com

CONSULTANTS
 HVAC, PLUMBING, FIRE PROTECTION
Petersen Engineering, INC
 PO Box 4516
 Portsmouth, NH 03802
 603-436-4233 tel
<https://www.petersenengineering.com>

STORMWATER DESIGN
Altus Engineering
 133 Court Street
 Portsmouth, NH 03801
 603-433-2335 tel
<https://www.altus-eng.com>

REGISTRATION

90% SUBMITTAL PRELIMINARY COPY

NOTE: This document is preliminary only and is not intended for any purpose except review and comment by the owner and its agents.

ISSUE/REVISION

I/R	DATE	DESCRIPTION

PROJECT NUMBER

60693508

Designed By:	JL
Drawn By:	MT
Dept Check:	CB
Proj Check:	EM
Date:	JANUARY 2025
Scale:	AS NOTED

DISCIPLINE

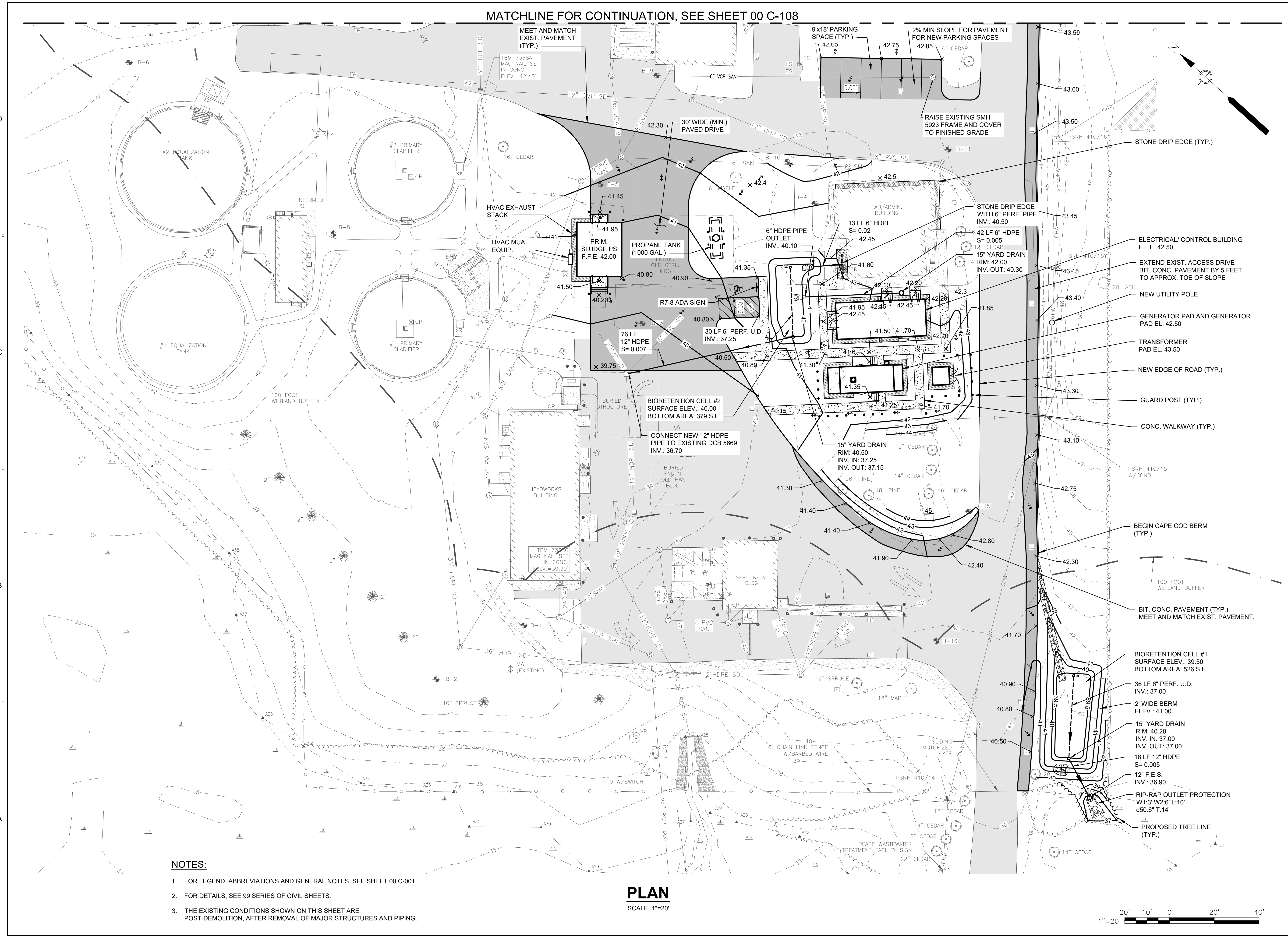
CIVIL

SHEET TITLE

SITE LAYOUT, PAVING, GRADING AND DRAINAGE PLAN I

SHEET NUMBER

00 C-107

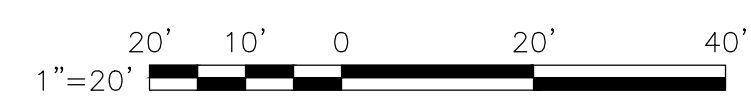


NOTES:

- FOR LEGEND, ABBREVIATIONS AND GENERAL NOTES, SEE SHEET 00 C-001.
- FOR DETAILS, SEE 99 SERIES OF CIVIL SHEETS.
- THE EXISTING CONDITIONS SHOWN ON THIS SHEET ARE POST-DEMOLITION, AFTER REMOVAL OF MAJOR STRUCTURES AND PIPING.

PLAN

SCALE: 1"=20'



PATH: C:\USERS\BENZIGER\APPDATA\LOCAL\AECOM\60693508\PEASE WWTFF REHABILITATION\PROJECT FILES\910-CAD_BMW25-SHEETS\0006 C-107.DWG
 LAST UPDATE: Friday, January 31, 2025 2:02:31 PM
 PLOT DATE: Friday, January 31, 2025 2:15:33 PM