

**OWNER**

**CITY OF PORTSMOUTH NEW HAMPSHIRE**  
 DEPARTMENT OF PUBLIC WORKS  
 680 Peaverly Hill Road  
 Portsmouth, NH 03801  
 603-427-1530 tel 603-427-1539 fax  
<http://www.cityofportsmouth.com/publicworks>

**ENGINEER**

AECOM TECHNICAL SERVICES, INC.  
 250 APOLLO DRIVE  
 CHELMSFORD, MA 01824  
 PHONE: (978) 905-2100  
[www.aecom.com](http://www.aecom.com)

**CONSULTANTS**

HVAC, PLUMBING, FIRE PROTECTION  
**Petersen Engineering, INC**  
 PO Box 4516  
 Portsmouth, NH 03802  
 603-436-4233 tel  
<https://www.petersenengineering.com>

**STORMWATER DESIGN**

**Altus Engineering**  
 133 Court Street  
 Portsmouth, NH 03801  
 603-433-2335 tel  
<https://www.altus-eng.com>

**REGISTRATION**

**90% SUBMITTAL PRELIMINARY COPY**

NOTE: This document is preliminary only and is not intended for any purpose except review and comment by the owner and its agents.

**ISSUE/REVISION**

I/R	DATE	DESCRIPTION

**PROJECT NUMBER**

60693508

Designed By: JL

Drawn By: MT

Dept Check: CB

Proj Check: EM

Date: JANUARY 2025

Scale: AS NOTED

**DISCIPLINE**

CIVIL

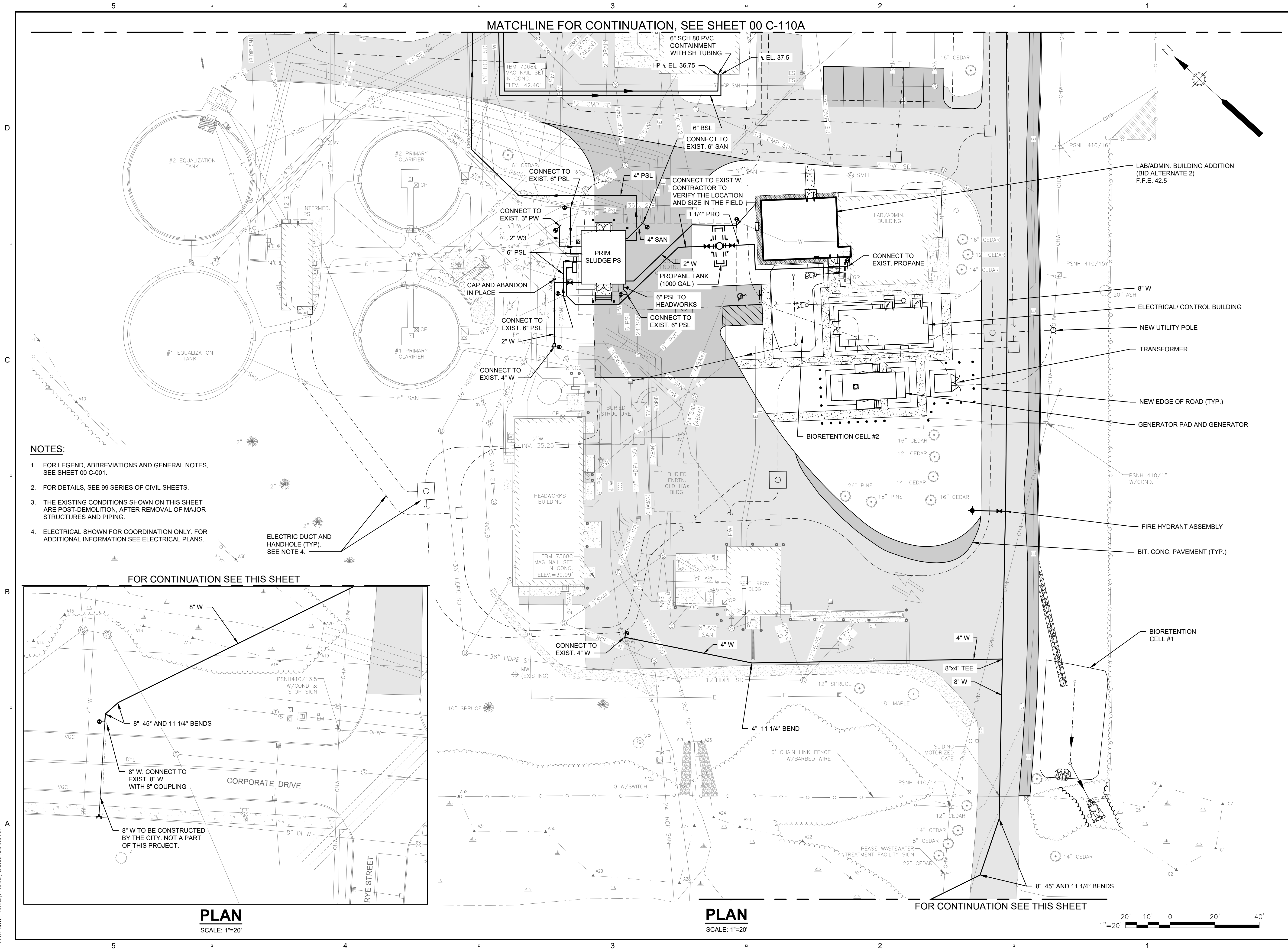
**SHEET TITLE**

**YARD PIPING PLAN I (BID ALT)**

**SHEET NUMBER**

00 C-109A

MATCHLINE FOR CONTINUATION, SEE SHEET 00 C-110A

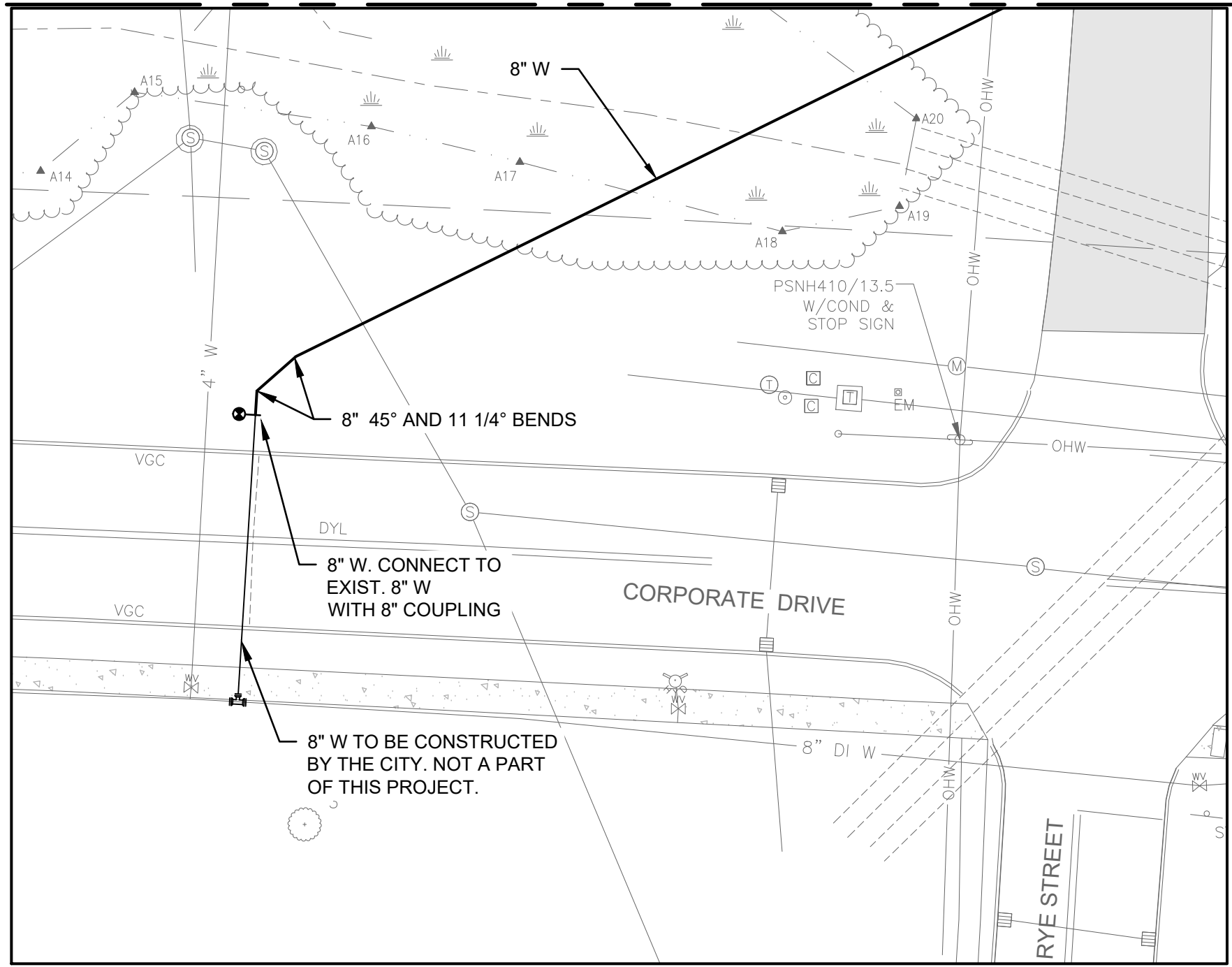


**NOTES:**

- FOR LEGEND, ABBREVIATIONS AND GENERAL NOTES, SEE SHEET 00 C-001.
- FOR DETAILS, SEE 99 SERIES OF CIVIL SHEETS.
- THE EXISTING CONDITIONS SHOWN ON THIS SHEET ARE POST-DEMOLITION, AFTER REMOVAL OF MAJOR STRUCTURES AND PIPING.
- ELECTRICAL SHOWN FOR COORDINATION ONLY. FOR ADDITIONAL INFORMATION SEE ELECTRICAL PLANS.

ELECTRIC DUCT AND HANDHOLE (TYP). SEE NOTE 4.

FOR CONTINUATION SEE THIS SHEET



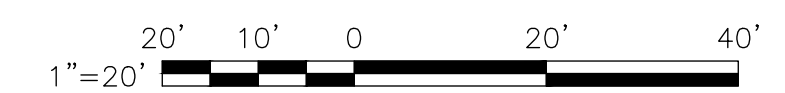
**PLAN**

SCALE: 1"=20'

**PLAN**

SCALE: 1"=20'

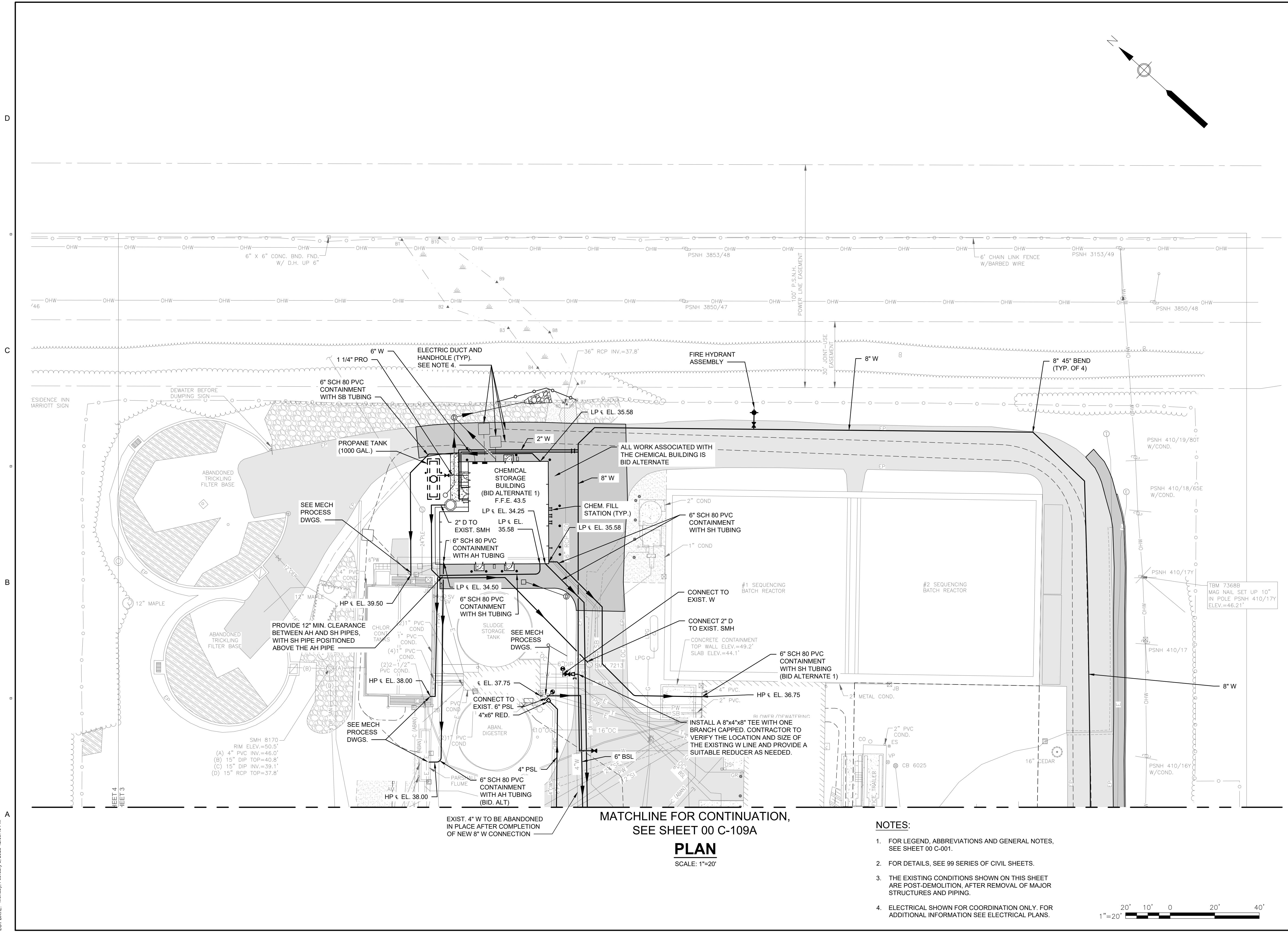
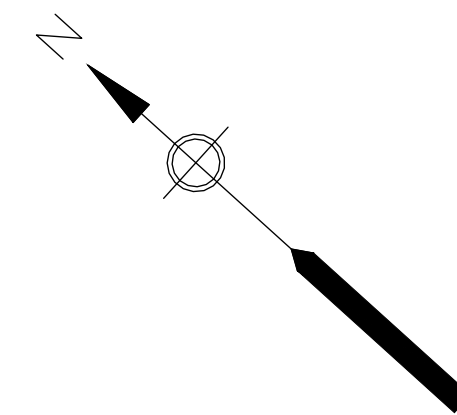
FOR CONTINUATION SEE THIS SHEET



PATH: C:\USERS\THIBAUD\AECOM\60693508\PEASE WWTF REHABILITATION\PROJECT FILES\910-CAD\_BIM\20-SHEETS\SC00 C-109.DWG  
 LAST UPDATE: Friday, January 31, 2025 2:51:01 PM  
 PLOT DATE: Monday, February 3, 2025 12:04:03 PM

I/R	DATE	DESCRIPTION

Designed By:	JL
Drawn By:	MT
Dept Check:	CB
Proj Check:	EM
Date:	JANUARY 2025
Scale:	AS NOTED

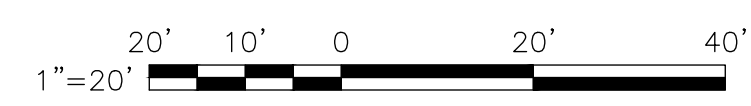


MATCHLINE FOR CONTINUATION,  
 SEE SHEET 00 C-109A

**PLAN**  
 SCALE: 1"=20'

**NOTES:**

- FOR LEGEND, ABBREVIATIONS AND GENERAL NOTES, SEE SHEET 00 C-001.
- FOR DETAILS, SEE 99 SERIES OF CIVIL SHEETS.
- THE EXISTING CONDITIONS SHOWN ON THIS SHEET ARE POST-DEMOLITION, AFTER REMOVAL OF MAJOR STRUCTURES AND PIPING.
- ELECTRICAL SHOWN FOR COORDINATION ONLY. FOR ADDITIONAL INFORMATION SEE ELECTRICAL PLANS.



PATH: \\C:\Users\THIBODIA\OneDrive\Documents\PEASE WWTFF REHABILITATION\PROJECT FILES\910-CAD\_BIM\20-SHEETS\CAD C-110.DWG  
 LAST UPDATE: Friday, January 31, 2025 3:04:02 PM  
 PLOT DATE: Monday, February 3, 2025 12:09:43 PM